

Product datasheet

Anti-BTBD15 antibody ab117775

★☆☆☆☆ 1 Abreviews 画像数 2

製品の概要

製品名	Anti-BTBD15 antibody
製品の詳細	Rabbit polyclonal to BTBD15
アプリケーション	適用あり: WB, IP
種交差性	交差種: Human 交差が予測される動物種: Rabbit, Horse, Chicken, Guinea pig, Cow, Dog, Turkey, Pig, Xenopus laevis, Chimpanzee, Rhesus monkey, Gorilla, Orangutan, Xenopus tropicalis, Platypus ▲
免疫原	Synthetic peptide, corresponding to a region within amino acids 300-350 of Human BTBD15 (BA46608.1).
ポジティブ・コントロール	Jurkat, HeLa and 293T whole cell lysates.

製品の特性

製品の状態	Liquid
保存方法	Shipped at 4°C. Upon delivery aliquot and store at -20°C. Avoid freeze / thaw cycles.
バッファー	Preservative: 0.09% Sodium azide Constituent: 99% Tris citrate/phosphate Note: pH 7-8
精製度	Immunogen affinity purified
特記事項 (精製)	ab117775 was affinity purified using an epitope specific to BTBD15 immobilized on solid support.
ポリ/モノ	ポリクローナル
アイソタイプ	IgG

アプリケーション

Our [Abpromise guarantee](#) covers the use of **ab117775** in the following tested applications.

The application notes include recommended starting dilutions; optimal dilutions/concentrations should be determined by the end user.

アプリケーション	Abreviews	特記事項
WB	★☆☆☆☆	1/2000 - 1/10000. Predicted molecular weight: 64 kDa.

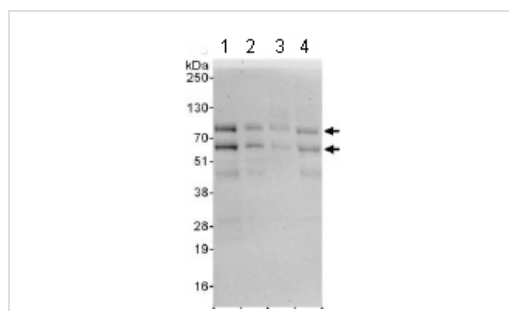
アプリケーション**Abreviews****特記事項**

IP

Use at 2-10 µg/mg of lysate.

ターゲット情報

機能	May be involved in transcriptional regulation.
配列類似性	Contains 1 BTB (POZ) domain. Contains 4 C2H2-type zinc fingers.
翻訳後修飾	Phosphorylated upon DNA damage, probably by ATM or ATR.
細胞内局在	Nucleus.

画像

Western blot - Anti-BTBD15 antibody (ab117775)

All lanes : Anti-BTBD15 antibody (ab117775)
at 0.1 µg/ml

Lane 1 : Jurkat whole cell lysate at 50 µg

Lane 2 : Jurkat whole cell lysate at 15 µg

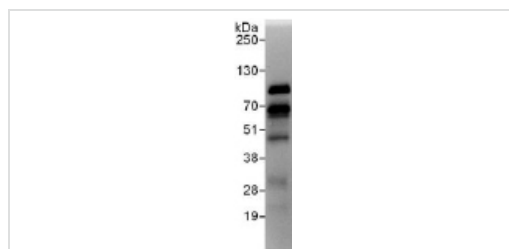
Lane 3 : HeLa whole cell lysate at 50 µg

Lane 4 : 293T whole cell lysate at 50 µg

Developed using the ECL technique

Predicted band size : 64 kDa

Exposure time : 30 seconds



Immunoprecipitation - Anti-BTBD15 antibody (ab117775)

Detection of BTBD15 by Western Blot of Immunoprecipitate.

ab117775 at 1 µg/ml staining BTBD15 in Jurkat whole cell lysate immunoprecipitated using ab117775 at 6 µg/mg lysate (1 mg/IP; 20% of IP loaded/lane).

Detection: Chemiluminescence with exposure time of 10 seconds.

Please note: All products are "FOR RESEARCH USE ONLY AND ARE NOT INTENDED FOR DIAGNOSTIC OR THERAPEUTIC USE"

Our Abpromise to you: Quality guaranteed and expert technical support

- Replacement or refund for products not performing as stated on the datasheet
- Valid for 12 months from date of delivery
- Response to your inquiry within 24 hours

- We provide support in Chinese, English, French, German, Japanese and Spanish
- Extensive multi-media technical resources to help you
- We investigate all quality concerns to ensure our products perform to the highest standards

If the product does not perform as described on this datasheet, we will offer a refund or replacement. For full details of the Abpromise, please visit <http://www.abcam.co.jp/abpromise> or contact our technical team.

Terms and conditions

- Guarantee only valid for products bought direct from Abcam or one of our authorized distributors