

## Product datasheet

# Anti-BNP antibody ab97787

### 画像数 1

#### 製品の概要

---

製品名	Anti-BNP antibody
製品の詳細	Rabbit polyclonal to BNP
由来種	Rabbit
アプリケーション	適用あり: WB
種交差性	交差種: Human
免疫原	Recombinant protein fragment containing a sequence corresponding to a region within amino acids 1 and 120 of Human BNP (NP_002512).
ポジティブ・コントロール	293T, A431, H1299, MOLT4 or Raji cell lines. HeLa and HepG2 whole cell lysate.

#### 法規制情報

---

### 医薬用外毒物

#### 製品の特性

---

製品の状態	Liquid
保存方法	Shipped at 4°C. Upon delivery aliquot. Store at -20°C or -80°C. Avoid freeze / thaw cycle.
バッファー	Preservative: 0.01% Thimerosal (merthiolate) Constituents: 20% Glycerol, 1% BSA, 1X PBS, pH 7.0
精製度	Immunogen affinity purified
ポリ/モノ	ポリクローナル
アイソタイプ	IgG

#### アプリケーション

---

Our [Abpromise guarantee](#) covers the use of **ab97787** in the following tested applications.

The application notes include recommended starting dilutions; optimal dilutions/concentrations should be determined by the end user.

**アプリケーション****Abreviews****特記事項**

WB

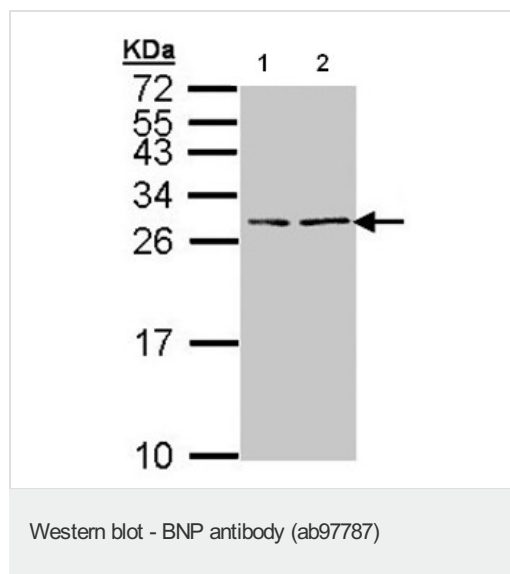
1/500 - 1/3000. Predicted molecular weight: 15 kDa.

**ターゲット情報****関連性**

Brain natriuretic peptide (BNP) circulates in blood as a peptide hormone with natriuretic, vasodilatory and renin inhibitory properties. BNP is secreted predominantly by the left ventricular myocytes in response to volume expansion and pressure overload. BNP belongs to a family of structurally similar peptide hormones, which includes atrial natriuretic peptide (ANP), BNP, C type natriuretic peptide (CNP) and urodilatin. These peptides are characterized by a common 17 amino acid ring structure with a disulfide bond between two cysteine residues. This ring structure shows high homology between different natriuretic peptides (eleven of the 17 amino acid residues are homologous in the ring of each of the natriuretic peptides). BNP is a 32 amino acid peptide with disulfide bond between the cysteine residues Cys10 and Cys26. In earlier studies it has been demonstrated that BNP concentration in blood increases with the severity of congestive heart failure. Quantitative measurement of BNP in blood provides an objective indicator of congestive heart failure severity.

**細胞内局在**

Secreted

**画像**

**All lanes** : Anti-BNP antibody (ab97787) at 1/1000 dilution

**Lane 1** : HeLa whole cell lysate

**Lane 2** : HepG2 whole cell lysate

Lysates/proteins at 30 µg per lane.

**Predicted band size:** 15 kDa

15% SDS PAGE

**Please note:** All products are "FOR RESEARCH USE ONLY AND ARE NOT INTENDED FOR DIAGNOSTIC OR THERAPEUTIC USE"

**Our Abpromise to you: Quality guaranteed and expert technical support**

- Replacement or refund for products not performing as stated on the datasheet
- Valid for 12 months from date of delivery
- Response to your inquiry within 24 hours

- We provide support in Chinese, English, French, German, Japanese and Spanish
- Extensive multi-media technical resources to help you
- We investigate all quality concerns to ensure our products perform to the highest standards

If the product does not perform as described on this datasheet, we will offer a refund or replacement. For full details of the Abpromise, please visit <http://www.abcam.co.jp/abpromise> or contact our technical team.

### **Terms and conditions**

---

- Guarantee only valid for products bought direct from Abcam or one of our authorized distributors