

Product datasheet

Anti-BMPR1A antibody ab59947

4 References [画像数 2](#)

製品の概要

製品名	Anti-BMPR1A antibody
製品の詳細	Rabbit polyclonal to BMPR1A
由来種	Rabbit
アプリケーション	適用あり: ELISA, WB
種交差性	交差種: Mouse, Human
免疫原	Synthetic peptide corresponding to Human BMPR1A aa 1-30 (N terminal) conjugated to Keyhole Limpet Haemocyanin (KLH). Database link: 657

製品の特性

製品の状態	Liquid
保存方法	Shipped at 4°C. Store at +4°C short term (1-2 weeks). Upon delivery aliquot. Store at -20°C long term.
バッファー	Preservative: 0.09% Sodium Azide Constituents: PBS
精製度	Protein G purified
特記事項 (精製)	ab59947 is purified through a protein G column, eluted with high and low pH buffers and neutralized immediately, followed by dialysis against PBS.
ポリ/モノ	ポリクローナル
アイソタイプ	IgG

アプリケーション

Our [Abpromise guarantee](#) covers the use of **ab59947** in the following tested applications.

The application notes include recommended starting dilutions; optimal dilutions/concentrations should be determined by the end user.

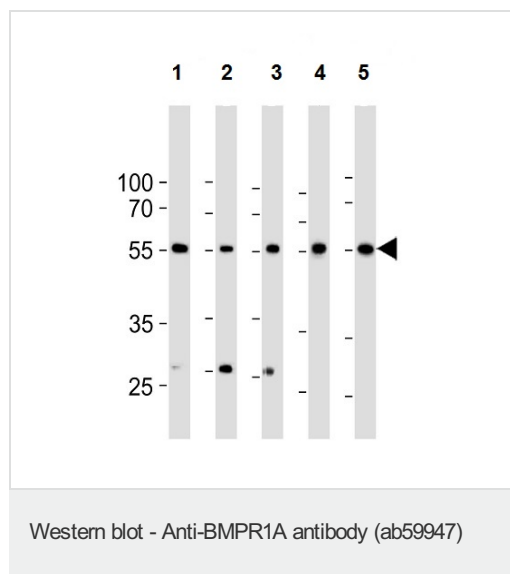
アプリケーション	Abreviews	特記事項
ELISA		1/1000.

アプリケーション	Abreviews	特記事項
WB		1/100 - 1/500. Detects a band of approximately 60 kDa (predicted molecular weight: 60 kDa).

ターゲット情報

機能	On ligand binding, forms a receptor complex consisting of two type II and two type I transmembrane serine/threonine kinases. Type II receptors phosphorylate and activate type I receptors which autophosphorylate, then bind and activate SMAD transcriptional regulators. Receptor for BMP2, BMP4, GDF5 and GDF6. Positively regulates chondrocyte differentiation through GDF5 interaction. Mediates induction of adipogenesis by GDF6.
組織特異性	Highly expressed in skeletal muscle.
関連疾患	Juvenile polyposis syndrome Polyposis syndrome, mixed hereditary 2 A microdeletion of chromosome 10q23 involving BMPR1A and PTEN is a cause of chromosome 10q23 deletion syndrome, which shows overlapping features of the following three disorders: Bannayan-Zonana syndrome, Cowden disease and juvenile polyposis syndrome.
配列類似性	Belongs to the protein kinase superfamily. TKL Ser/Thr protein kinase family. TGFB receptor subfamily. Contains 1 GS domain. Contains 1 protein kinase domain.
細胞内局在	Membrane.

画像



All lanes : Anti-BMPR1A antibody (ab59947)
at 1/1000 dilution

Lane 1 : HeLa cell lysate

Lane 2 : K562 cell lysate

Lane 3 : MCF7 cell lysate

Lane 4 : Human liver tissue lysate

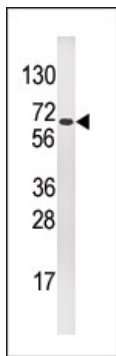
Lane 5 : Mouse liver tissue lysate

Lysates/proteins at 35 µg per lane.

Secondary

All lanes : HRP goat anti-rabbit (H+L) at
1/1000 dilution

Predicted band size: 60 kDa



Western blot - Anti-BMPRI1A antibody (ab59947)

Anti-BMPRI1A antibody (ab59947) at 1/100

dilution

Predicted band size: 60 kDa

Observed band size: 60 kDa

Please note: All products are "FOR RESEARCH USE ONLY AND ARE NOT INTENDED FOR DIAGNOSTIC OR THERAPEUTIC USE"

Our Abpromise to you: Quality guaranteed and expert technical support

- Replacement or refund for products not performing as stated on the datasheet
- Valid for 12 months from date of delivery
- Response to your inquiry within 24 hours
- We provide support in Chinese, English, French, German, Japanese and Spanish
- Extensive multi-media technical resources to help you
- We investigate all quality concerns to ensure our products perform to the highest standards

If the product does not perform as described on this datasheet, we will offer a refund or replacement. For full details of the Abpromise, please visit <http://www.abcam.co.jp/abpromise> or contact our technical team.

Terms and conditions

- Guarantee only valid for products bought direct from Abcam or one of our authorized distributors