


Product datasheet

Anti-BMP7 antibody ab27569

★★★★☆ 2 Abreviews 4 References 画像数 2

製品の概要

| | |
|--------------|---|
| 製品名 | Anti-BMP7 antibody |
| 製品の詳細 | Rabbit polyclonal to BMP7 |
| 由来種 | Rabbit |
| アプリケーション | 適用あり: ELISA, WB, Sandwich ELISA, ICC/IF, Neutralising |
| 種交差性 | 交差種: Mouse, Rat, Human 交差が予測される動物種: Xenopus laevis  |
| 免疫原 | Recombinant full length human BMP7 protein. |
| ポジティブ・コントロール | ウェスタン・ブロット用ポジティブコントロール Human BMP7 full length protein > |

製品の特性

| | |
|----------|--|
| 製品の状態 | Lyophilised:Reconstitute in 200ul sterile water to a concentration of 0.5 mg/ml |
| 保存方法 | Shipped at 4°C. Store at +4°C short term (1-2 weeks). Upon delivery aliquot. Store at -20°C long term. |
| バッファー | Preservative: None Constituents:0.5 X PBS, pH 7.4. |
| 精製度 | Immunogen affinity purified |
| 特記事項(精製) | This antibody was purified by affinity chromatography employing immobilized hBMP7 matrix. |
| ポリ/モノ | ポリクローナル |
| アイソタイプ | IgG |

アプリケーション

Our [Abpromise guarantee](#) covers the use of **ab27569** in the following tested applications.

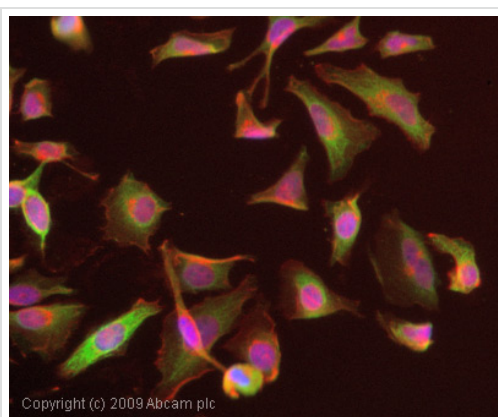
The application notes include recommended starting dilutions; optimal dilutions/concentrations should be determined by the end user.

| アプリケーション | Abreviews | 特記事項 |
|----------------|-----------|---|
| ELISA | | Use a concentration of 0.5 µg/ml. |
| WB | ★★★★☆ | Use a concentration of 0.1 - 0.2 µg/ml. Predicted molecular weight: 49 kDa. |
| Sandwich ELISA | | Use a concentration of 0.5 µg/ml. Can be paired for Sandwich ELISA with Rabbit polyclonal to BMP7 (Biotin) (ab84030) . Use as Capture antibody. |
| ICC/IF | ★★★★☆ | Use a concentration of 1 - 5 µg/ml. |
| Neutralising | | Use at an assay dependent dilution. |

ターゲット情報

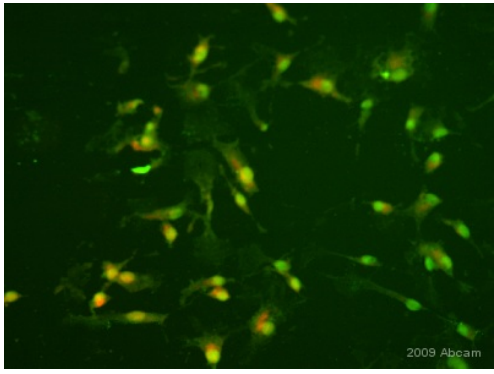
| | |
|-------|--|
| 機能 | Induces cartilage and bone formation. May be the osteoinductive factor responsible for the phenomenon of epithelial osteogenesis. Plays a role in calcium regulation and bone homeostasis. |
| 組織特異性 | Expressed in the kidney and bladder. Lower levels seen in the brain. |
| 配列類似性 | Belongs to the TGF-beta family. |
| 発生段階 | Expressed in the developing eye, brain and ear during embryogenesis. |
| 翻訳後修飾 | Several N-termini starting at positions 293, 300, 315 and 316 have been identified by direct sequencing resulting in secretion of different mature forms (PubMed:17977014). |
| 細胞内局在 | Secreted. |

画像



Immunocytochemistry/ Immunofluorescence - Anti-BMP7 antibody (ab27569)

ICC/IF image of ab27569 stained HeLa cells. The cells were 4% PFA fixed (10 min) and then incubated in 1%BSA / 10% normal goat serum / 0.3M glycine in 0.1% PBS-Tween for 1h to permeabilise the cells and block non-specific protein-protein interactions. The cells were then incubated with the antibody (ab27569, 1µg/ml) overnight at +4°C. The secondary antibody (green) was Alexa Fluor® 488 goat anti-rabbit IgG (H+L) used at a 1/1000 dilution for 1h. Alexa Fluor® 594 WGA was used to label plasma membranes (red) at a 1/200 dilution for 1h. DAPI was used to stain the cell nuclei (blue) at a concentration of 1.43µM.



Immunohistochemistry (PFA perfusion fixed frozen sections) - Anti-BMP7 antibody (ab27569)

This image is courtesy of Ruma Raha-Chowdhury, University Of Cambridge, United Kingdom

ICC/IF image of Rat primary hepatocytes culture cells stained with ab27569. The cells were fixed with 4% PFA and incubated in 5% normal donkey serum in 0.1% PBS- and triton X100 for 1h to permeabilise the cells and block non-specific protein-protein interactions. The cells were then incubated with the antibody (ab27569, 1µg/ml) and (ab15640) overnight at +4°C. The secondary antibody (green) was Alexa Fluor® 488 donkey anti-rabbit IgG (H+L) used at a 1/1000 dilution for 1h. Alexa Fluor® 568 (red) at a 1/1000 dilution for 1h. DAPI was used to stain the cell nuclei (blue) at a concentration of 1.43µM.

Please note: All products are "FOR RESEARCH USE ONLY AND ARE NOT INTENDED FOR DIAGNOSTIC OR THERAPEUTIC USE"

Our Abpromise to you: Quality guaranteed and expert technical support

- Replacement or refund for products not performing as stated on the datasheet
- Valid for 12 months from date of delivery
- Response to your inquiry within 24 hours
- We provide support in Chinese, English, French, German, Japanese and Spanish
- Extensive multi-media technical resources to help you
- We investigate all quality concerns to ensure our products perform to the highest standards

If the product does not perform as described on this datasheet, we will offer a refund or replacement. For full details of the Abpromise, please visit <http://www.abcam.co.jp/abpromise> or contact our technical team.

Terms and conditions

- Guarantee only valid for products bought direct from Abcam or one of our authorized distributors