

Product datasheet

Anti-BCRP/ABCG2 antibody [EPR2099(2)] ab108312

リコンビナント RabMAb®

★★★★☆ 2 Abreviews 3 References 画像数 1

製品の概要

製品名	Anti-BCRP/ABCG2 antibody [EPR2099(2)]
製品の詳細	Rabbit monoclonal [EPR2099(2)] to BCRP/ABCG2
由来種	Rabbit
アプリケーション	適用あり: WB 適用なし: Flow Cyt, ICC, IHC-P or IP
種交差性	交差種: Human
免疫原	A synthetic peptide corresponding to residues in the intracellular domain of Human BCRP/ABCG2.
ポジティブ・コントロール	Human fetal liver, JAR, 293T, HepG2, and Human placenta lysates.
特記事項	This product is a recombinant rabbit monoclonal antibody. Mouse, Rat: We have preliminary internal testing data to indicate this antibody may not react with these species. Please contact us for more information. Our RabMAb® technology is a patented hybridoma-based technology for making rabbit monoclonal antibodies. For details on our patents, please refer to RabMAb® patents

製品の特性

製品の状態	Liquid
保存方法	Shipped at 4°C. Store at -20°C. Stable for 12 months at -20°C.
バッファー	PBS 49%, Sodium azide 0.01%, Glycerol 50%, BSA 0.05%
精製度	Tissue culture supernatant
ポリ/モノ	モノクローナル
クローン名	EPR2099(2)
アイソタイプ	IgG

アプリケーション

Our [Abpromise guarantee](#) covers the use of **ab108312** in the following tested applications.

The application notes include recommended starting dilutions; optimal dilutions/concentrations should be determined by the end user.

アプリケーション	Abreviews	特記事項
----------	-----------	------

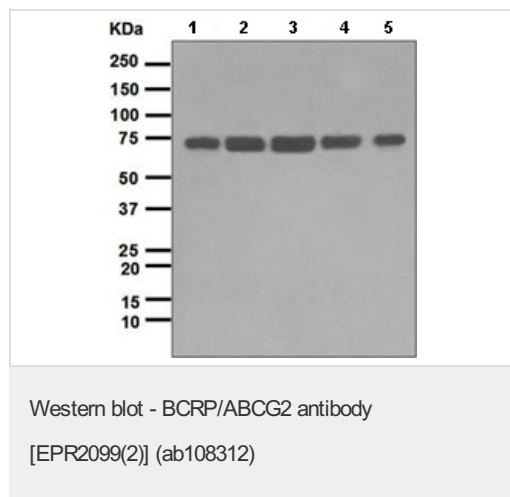
WB 1/1000 - 1/10000. Predicted molecular weight: 72 kDa.

追加情報 Is unsuitable for Flow Cyt, ICC, IHC-P or IP.

ターゲット情報

機能	Xenobiotic transporter that may play an important role in the exclusion of xenobiotics from the brain. May be involved in brain-to-blood efflux. Appears to play a major role in the multidrug resistance phenotype of several cancer cell lines. When overexpressed, the transfected cells become resistant to mitoxantrone, daunorubicin and doxorubicin, display diminished intracellular accumulation of daunorubicin, and manifest an ATP-dependent increase in the efflux of rhodamine 123.
組織特異性	Highly expressed in placenta. Low expression in small intestine, liver and colon.
配列類似性	Belongs to the ABC transporter superfamily. ABCG family. Eye pigment precursor importer (TC 3.A.1.204) subfamily. Contains 1 ABC transmembrane type-2 domain. Contains 1 ABC transporter domain.
翻訳後修飾	Glycosylation-deficient ABCG2 is normally expressed and functional.
細胞内局在	Cell membrane.

画像



All lanes : Anti-BCRP/ABCG2 antibody
[EPR2099(2)] (ab108312) at 1/1000 dilution

- Lane 1 :** Human fetal liver lysate
- Lane 2 :** JAR lysate
- Lane 3 :** 293T lysate
- Lane 4 :** HepG2 lysate
- Lane 5 :** Human placenta lysate

Lysates/proteins at 10 µg per lane.

Predicted band size: 72 kDa

Please note: All products are "FOR RESEARCH USE ONLY AND ARE NOT INTENDED FOR DIAGNOSTIC OR THERAPEUTIC USE"

Our Abpromise to you: Quality guaranteed and expert technical support

- Replacement or refund for products not performing as stated on the datasheet

- Valid for 12 months from date of delivery
- Response to your inquiry within 24 hours

- We provide support in Chinese, English, French, German, Japanese and Spanish
- Extensive multi-media technical resources to help you
- We investigate all quality concerns to ensure our products perform to the highest standards

If the product does not perform as described on this datasheet, we will offer a refund or replacement. For full details of the Abpromise, please visit <http://www.abcam.co.jp/abpromise> or contact our technical team.

Terms and conditions

- Guarantee only valid for products bought direct from Abcam or one of our authorized distributors