

Product datasheet

Anti-BCKDHA antibody ab90691

★★★★☆ 1 Abreviews 2 References 画像数 2

製品の概要

製品名	Anti-BCKDHA antibody
製品の詳細	Rabbit polyclonal to BCKDHA
由来種	Rabbit
アプリケーション	適用あり: WB, IHC-P
種交差性	交差種: Mouse, Human 交差が予測される動物種: Rat, Sheep, Rabbit, Horse, Guinea pig, Cow, Cat, Dog, Pig, Chimpanzee, Zebrafish
免疫原	A synthetic peptide corresponding to a region within N terminal amino acids 72 - 121 (VISGIPYRV MDRQGQIINP SEDPHLPKEK VLKLYKSMTL LNTMDRILYE) of Human BCKDHA (NP_000700). Run BLAST with ExPASy Run BLAST with NCBI
ポジティブ・コントロール	MCF7 cell lysate

製品の特性

製品の状態	Liquid
保存方法	Shipped at 4°C. Upon delivery aliquot and store at -20°C or -80°C. Avoid repeated freeze / thaw cycles.
バッファー	Preservative: None Constituents: 2% Sucrose, PBS
精製度	Immunogen affinity purified
特記事項(精製)	Purified by peptide affinity chromatography method.
ポリ/モノ	ポリクローナル
アイソタイプ	IgG

アプリケーション

Our [Abpromise guarantee](#) covers the use of **ab90691** in the following tested applications.

The application notes include recommended starting dilutions; optimal dilutions/concentrations should be determined by the end user.

アプリ ケーショ ン	Abreviews	特記事項
------------------	-----------	------

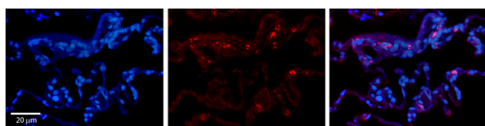
WB ★★★★★ Use a concentration of 1 µg/ml. Predicted molecular weight: 50 kDa. Can be blocked with [BCKDHA peptide \(ab134676\)](#). Good results were obtained when blocked with 5% non-fat dry milk in 0.05% PBS-T.

IHC-P 1/100.

ターゲット情報

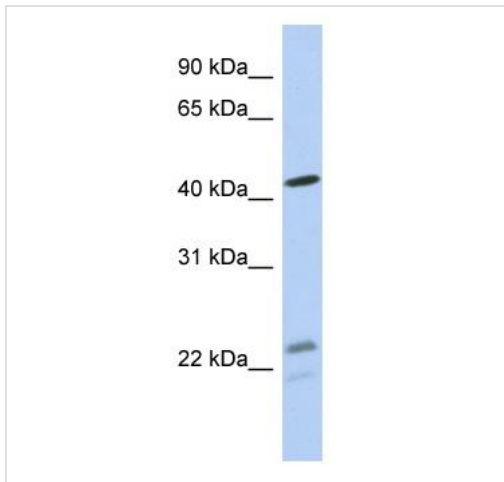
機能	The branched-chain alpha-keto dehydrogenase complex catalyzes the overall conversion of alpha-keto acids to acyl-CoA and CO ₂ . It contains multiple copies of three enzymatic components: branched-chain alpha-keto acid decarboxylase (E1), lipoamide acyltransferase (E2) and lipoamide dehydrogenase (E3).
関連疾患	Maple syrup urine disease 1A
配列類似性	Belongs to the BCKDHA family.
細胞内局在	Mitochondrion matrix.

画像



Immunohistochemistry (Formalin/PFA-fixed paraffin-embedded sections) - Anti-BCKDHA antibody (ab90691)

Immunohistochemistry (Formalin/PFA-fixed paraffin-embedded sections) analysis of human lung tissue labelling BCKDHA with ab90691 at 1/100. A Cy3-conjugated donkey anti-rabbit IgG (1/200) was used as the secondary antibody. Positive staining shown in the cytoplasm of alveolar type I and II cells. Magnification: 20X. Exposure time: 0.5 - 2.0 seconds. Left - DAPI. Middle - BCKDHA. Right - Merge.



Western blot - Anti-BCKDHA antibody (ab90691)

Anti-BCKDHA antibody (ab90691) at 1 μ g/ml
(in 5% skim milk / PBS buffer) + MCF7 cell
lysate at 10 μ g

Secondary

HRP conjugated anti-Rabbit IgG at 1/50000
dilution

Predicted band size: 50 kDa

Gel concentration: 12%

Please note: All products are "FOR RESEARCH USE ONLY AND ARE NOT INTENDED FOR DIAGNOSTIC OR THERAPEUTIC USE"

Our Abpromise to you: Quality guaranteed and expert technical support

- Replacement or refund for products not performing as stated on the datasheet
- Valid for 12 months from date of delivery
- Response to your inquiry within 24 hours
- We provide support in Chinese, English, French, German, Japanese and Spanish
- Extensive multi-media technical resources to help you
- We investigate all quality concerns to ensure our products perform to the highest standards

If the product does not perform as described on this datasheet, we will offer a refund or replacement. For full details of the Abpromise, please visit <http://www.abcam.co.jp/abpromise> or contact our technical team.

Terms and conditions

- Guarantee only valid for products bought direct from Abcam or one of our authorized distributors