

Product datasheet

Anti-BAP29 antibody ab62571

画像数 3

製品の概要

製品名	Anti-BAP29 antibody
製品の詳細	Rabbit polyclonal to BAP29
アプリケーション	適用あり: IHC-P, WB, ICC/IF
種交差性	交差種: Mouse, Rat, Human
免疫原	A 17 amino acid peptide from near the center of human BAP29
ポジティブ・コントロール	Human heart tissue lysate and human heart tissue.

製品の特性

製品の状態	Liquid
保存方法	Shipped at 4°C. Store at +4°C.
バッファー	Preservative: 0.02% Sodium Azide Constituents: PBS
精製度	Immunogen affinity purified
ポリモノ	ポリクローナル
アイソタイプ	IgG

アプリケーション

Our [Abpromise guarantee](#) covers the use of **ab62571** in the following tested applications.

The application notes include recommended starting dilutions; optimal dilutions/concentrations should be determined by the end user.

アプリケーション	Abreviews	特記事項
IHC-P		Use a concentration of 10 µg/ml.
WB		Use a concentration of 0.5 - 1 µg/ml. Detects a band of approximately 27 kDa (predicted molecular weight: 27 kDa).
ICC/IF		Use a concentration of 20 µg/ml.

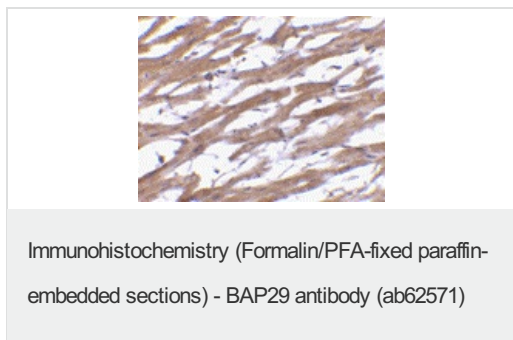
関連性

BAP29 and the related protein BAP31 are endoplasmic reticulum (ER) and ER-vesicle membrane proteins and members of the B-cell receptor-associated protein family. These two proteins are highly homologous and can form homo- and heterodimers. Both BAP29 and BAP31 interact with membrane-bound immunoglobulins (mlgs), such as IgM and IgD, which with Ig-alpha/Ig-beta heterodimers form B cell antigen receptors. Binding of the BAP29/BAP31 heterodimer correlates with the ER retention of non-Ig-alpha/Ig-beta bound mlg complexes, suggesting that BAP29 and BAP31 may act as chaperones for transmembrane regions of various proteins. There are multiple isoforms of BAP29.

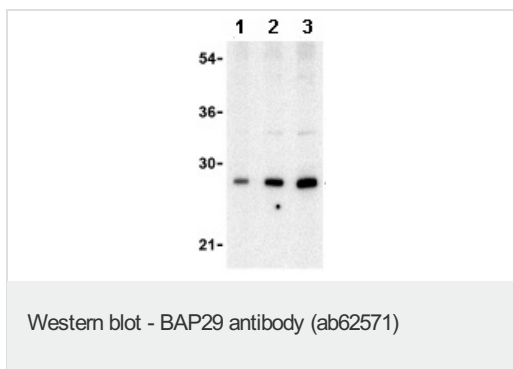
細胞内局在

Endoplasmic reticulum

Anti-BAP29 antibody 画像



ab62571 at 10µg/ml staining BAP29 in paraffin embedded human heart tissue section by Immunohistochemistry.



Lane 1 : Anti-BAP29 antibody (ab62571) at 0.5 µg/ml

Lane 2 : Anti-BAP29 antibody (ab62571) at 1 µg/ml

Lane 3 : Anti-BAP29 antibody (ab62571) at 2 µg/ml

Lane 1 : human heart tissue lysate

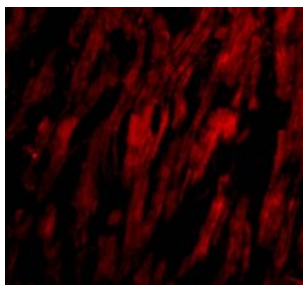
Lane 2 : human heart tissue lysate

Lane 3 : human heart tissue lysate

Lysates/proteins at 15 µg per lane.

Predicted band size : 27 kDa

Observed band size : 27 kDa



Immunofluorescence of BAP29 in Human
Heart cells using ab62571 at 20 ug/ml.

Immunocytochemistry/ Immunofluorescence-Anti-
BAP29 antibody(ab62571)

Please note: All products are "FOR RESEARCH USE ONLY AND ARE NOT INTENDED FOR DIAGNOSTIC OR THERAPEUTIC USE"

Our Abpromise to you: Quality guaranteed and expert technical support

- Replacement or refund for products not performing as stated on the datasheet
- Valid for 12 months from date of delivery
- Response to your inquiry within 24 hours

- We provide support in Chinese, English, French, German, Japanese and Spanish
- Extensive multi-media technical resources to help you
- We investigate all quality concerns to ensure our products perform to the highest standards

If the product does not perform as described on this datasheet, we will offer a refund or replacement. For full details of the Abpromise, please visit <http://www.abcam.co.jp/abpromise> or contact our technical team.

Terms and conditions

- Guarantee only valid for products bought direct from Abcam or one of our authorized distributors