

Product datasheet

Anti-Apg3 antibody [EPR4802] ab108282

リコンビナント **RabMAb**

1 References [画像数 2](#)

製品の概要

製品名	Anti-Apg3 antibody [EPR4802]
製品の詳細	Rabbit monoclonal [EPR4802] to Apg3
由来種	Rabbit
アプリケーション	適用あり: WB, IP, Flow Cyt 適用なし: ICC/IF or IHC-P
種交差性	交差種: Mouse, Rat, Human
免疫原	Synthetic peptide within Human Apg3 aa 250-350 (C terminal). The exact sequence is proprietary.
ポジティブ・コントロール	K562, HeLa or Jurkat cell lysates (WB) Permeabilized Jurkat cells (FC)
特記事項	

Our RabMAb[®] technology is a patented hybridoma-based technology for making rabbit monoclonal antibodies. For details on our patents, please refer to [RabMAb[®] patents](#)

This product is a recombinant rabbit monoclonal antibody.

製品の特性

製品の状態	Liquid
保存方法	Shipped at 4°C. Store at -20°C. Stable for 12 months at -20°C.
バッファー	PBS 49%, Sodium azide 0.01%, Glycerol 50%, BSA 0.05%
精製度	Tissue culture supernatant
ポリ/モノ	モノクローナル
クローン名	EPR4802
アイソタイプ	IgG

アプリケーション

Our [Abpromise guarantee](#) covers the use of **ab108282** in the following tested applications.

The application notes include recommended starting dilutions; optimal dilutions/concentrations should be determined by the end user.

アプリケーション	Abreviews	特記事項
WB		1/1000 - 1/10000. Detects a band of approximately 40 kDa (predicted molecular weight: 36 kDa).
IP		1/10 - 1/100.
Flow Cyt		1/10 - 1/100. ab172730 - Rabbit monoclonal IgG, is suitable for use as an isotype control with this antibody.

追加情報 Is unsuitable for ICC/IF or IHC-P.

ターゲット情報

機能 E2-like enzyme involved in autophagy and mitochondrial homeostasis. Catalyzes the conjugation of ATG8-like proteins (GABARAP, GABARAPL1, GABARAPL2 or MAP1LC3A) to phosphatidylethanolamine (PE). PE-conjugation to ATG8-like proteins is essential for autophagy. Preferred substrate is MAP1LC3A. Also acts as an autocatalytic E2-like enzyme, catalyzing the conjugation of ATG12 to itself, ATG12 conjugation to ATG3 playing a role in mitochondrial homeostasis but not in autophagy. ATG7 (E1-like enzyme) facilitates this reaction by forming an E1-E2 complex with ATG3.

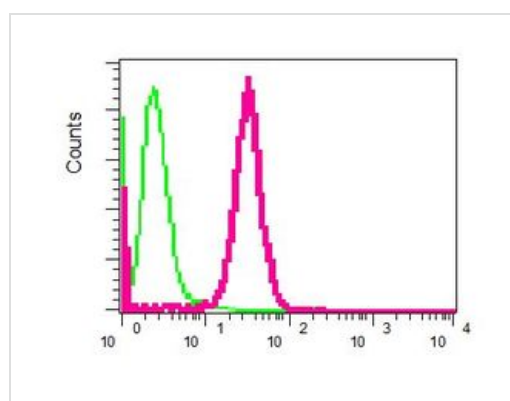
組織特異性 Widely expressed, with a highest expression in heart, skeletal muscle, kidney, liver and placenta.

配列類似性 Belongs to the ATG3 family.

翻訳後修飾 Conjugated to ATG12 at Lys-243. ATG12-conjugation plays a role in regulation of mitochondrial homeostasis and cell death, while it is not involved in PE-conjugation to ATG8-like proteins and autophagy.

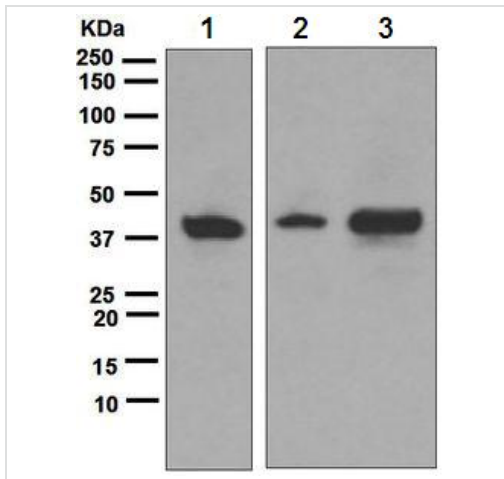
細胞内局在 Cytoplasm.

画像



Flow cytometric analysis of permeabilized Jurkat cells using ab108282 at 1/10 (red) or a rabbit IgG (negative) (green).

Flow Cytometry - Anti-Atg3 antibody [EPR4802] (ab108282)



Western blot - Anti-Apg3 antibody [EPR4802]
(ab108282)

All lanes : Anti-Apg3 antibody [EPR4802]
(ab108282) at 1/1000 dilution

Lane 1 : K562 cell lysate

Lane 2 : HeLa cell lysate

Lane 3 : Jurkat cell lysate

Lysates/proteins at 10 µg per lane.

Secondary

All lanes : HRP labelled goat anti-rabbit at
1/2000 dilution

Predicted band size: 36 kDa

Observed band size: 40 kDa

Please note: All products are "FOR RESEARCH USE ONLY AND ARE NOT INTENDED FOR DIAGNOSTIC OR THERAPEUTIC USE"

Our Abpromise to you: Quality guaranteed and expert technical support

- Replacement or refund for products not performing as stated on the datasheet
- Valid for 12 months from date of delivery
- Response to your inquiry within 24 hours
- We provide support in Chinese, English, French, German, Japanese and Spanish
- Extensive multi-media technical resources to help you
- We investigate all quality concerns to ensure our products perform to the highest standards

If the product does not perform as described on this datasheet, we will offer a refund or replacement. For full details of the Abpromise, please visit <http://www.abcam.co.jp/abpromise> or contact our technical team.

Terms and conditions

- Guarantee only valid for products bought direct from Abcam or one of our authorized distributors