

Product datasheet

Anti-Angiotensinogen antibody [EPR2930(2)] ab108294

リコンビナント RabMAb®

1 References [画像数 1](#)

製品の概要

製品名	Anti-Angiotensinogen antibody [EPR2930(2)]
製品の詳細	Rabbit monoclonal [EPR2930(2)] to Angiotensinogen
アプリケーション	適用あり: WB, IP, ICC, Flow Cyt 適用なし: IHC-P
種交差性	交差種: Human
免疫原	A synthetic peptide corresponding to residues in Human Angiotensinogen
ポジティブ・コントロール	Fetal kidney, fetal artery, fetal heart, HepG2, and Human plasma lysates
特記事項	This product is a recombinant rabbit monoclonal antibody. Mouse, Rat: We have preliminary internal testing data to indicate this antibody may not react with these species. Please contact us for more information. Our RabMAb® technology is a patented hybridoma-based technology for making rabbit monoclonal antibodies. For details on our patents, please refer to RabMAb® patents

製品の特性

製品の状態	Liquid
保存方法	Shipped at 4°C. Store at -20°C. Stable for 12 months at -20°C.
バッファー	PBS 49%, Sodium azide 0.01%, Glycerol 50%, BSA 0.05%
精製度	Tissue culture supernatant
ポリ/モノ	モノクローナル
クローン名	EPR2930(2)
アイソタイプ	IgG

アプリケーション

Our [Abpromise guarantee](#) covers the use of **ab108294** in the following tested applications.

The application notes include recommended starting dilutions; optimal dilutions/concentrations should be determined by the end user.

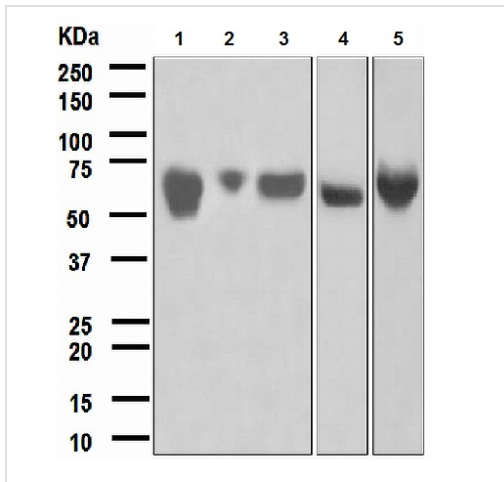
アプリケーション	Abreviews	特記事項
WB		1/10000 - 1/50000. Predicted molecular weight: 53 kDa.
IP		1/10 - 1/100.
ICC		1/500 - 1/1000.
Flow Cyt		1/100 - 1/500. ab172730 -Rabbit monoclonal IgG, is suitable for use as an isotype control with this antibody.

追加情報 Is unsuitable for IHC-P.

ターゲット情報

機能	<p>Essential component of the renin-angiotensin system (RAS), a potent regulator of blood pressure, body fluid and electrolyte homeostasis. In response to lowered blood pressure, the enzyme renin cleaves angiotensinogen to produce angiotensin-1 (angiotensin 1-10). Angiotensin-1 is a substrate of ACE (angiotensin converting enzyme) that removes a dipeptide to yield the physiologically active peptide angiotensin-2 (angiotensin 1-8). Angiotensin-1 and angiotensin-2 can be further processed to generate angiotensin-3 (angiotensin 2-8), angiotensin-4 (angiotensin 3-8). Angiotensin 1-7 is cleaved from angiotensin-2 by ACE2 or from angiotensin-1 by MME (nepilysin). Angiotensin 1-9 is cleaved from angiotensin-1 by ACE2. Angiotensin-2 acts directly on vascular smooth muscle as a potent vasoconstrictor, affects cardiac contractility and heart rate through its action on the sympathetic nervous system, and alters renal sodium and water absorption through its ability to stimulate the zona glomerulosa cells of the adrenal cortex to synthesize and secrete aldosterone.</p> <p>Angiotensin-3 stimulates aldosterone release.</p> <p>Angiotensin 1-7 is a ligand for the G-protein coupled receptor MAS1 (By similarity). Has vasodilator and antidiuretic effects (By similarity). Has an antithrombotic effect that involves MAS1-mediated release of nitric oxide from platelets.</p>
組織特異性	Expressed by the liver and secreted in plasma.
関連疾患	<p>Genetic variations in AGT are a cause of susceptibility to essential hypertension (EHT) [MIM:145500]. Essential hypertension is a condition in which blood pressure is consistently higher than normal with no identifiable cause.</p> <p>Defects in AGT are a cause of renal tubular dysgenesis (RTD) [MIM:267430]. RTD is an autosomal recessive severe disorder of renal tubular development characterized by persistent fetal anuria and perinatal death, probably due to pulmonary hypoplasia from early-onset oligohydramnios (the Potter phenotype).</p>
配列類似性	Belongs to the serpin family.
翻訳後修飾	Beta-decarboxylation of Asp-34 in angiotensin-2, by mononuclear leukocytes produces alanine. The resulting peptide form, angiotensin-A, has the same affinity for the AT1 receptor as angiotensin-2, but a higher affinity for the AT2 receptor.
細胞内局在	Secreted.

画像



Western blot - Angiotensinogen antibody
[EPR2930(2)] (ab108294)

All lanes : Anti-Angiotensinogen antibody
[EPR2930(2)] (ab108294) at 1/10000 dilution

Lane 1 : Human fetal kidney lysate

Lane 2 : Human fetal artery lysate

Lane 3 : Human fetal heart lysate

Lane 4 : HepG2 cell lysate

Lane 5 : Human plasma lysate

Lysates/proteins at 10 µg per lane.

Predicted band size : 53 kDa

Please note: All products are "FOR RESEARCH USE ONLY AND ARE NOT INTENDED FOR DIAGNOSTIC OR THERAPEUTIC USE"

Our Abpromise to you: Quality guaranteed and expert technical support

- Replacement or refund for products not performing as stated on the datasheet
- Valid for 12 months from date of delivery
- Response to your inquiry within 24 hours
- We provide support in Chinese, English, French, German, Japanese and Spanish
- Extensive multi-media technical resources to help you
- We investigate all quality concerns to ensure our products perform to the highest standards

If the product does not perform as described on this datasheet, we will offer a refund or replacement. For full details of the Abpromise, please visit <http://www.abcam.co.jp/abpromise> or contact our technical team.

Terms and conditions

- Guarantee only valid for products bought direct from Abcam or one of our authorized distributors