

Product datasheet

Anti-Angiotensin II Type 1 Receptor antibody ab18801

★★★★★ 6 Abreviews 20 References 画像数 3

製品の概要

製品名	Anti-Angiotensin II Type 1 Receptor antibody
製品の詳細	Rabbit polyclonal to Angiotensin II Type 1 Receptor
由来種	Rabbit
特異性	This antibody recognizes isoforms AT-1A and AT-1B of the Angiotensin II type 1 receptor (AT-1r) in rat. We have received feedback that this antibody may not be specific for the antigen (see PubMed 22843099 on the References page).
アプリケーション	適用あり: WB, IHC-Fr, IHC-FoFr, IHC-P, Electron Microscopy
種交差性	交差種: Mouse, Rat, Cow, Dog, Pig
免疫原	Synthetic peptide: PSDNMSSSAKKPASC conjugated to KLH, corresponding to Internal sequence amino acids 341-355 of Angiotensin II Type 1 Receptor AT-1A. Synthetic peptide: SSSAKKSASFFEVE conjugated to KLH, corresponding to Internal sequence amino acids 346-359 of Angiotensin II Type 1 Receptor AT-1B.
	<div style="display: flex; justify-content: space-around; align-items: center;"> <div style="text-align: center;"> </div> <div style="text-align: center;"> </div> <div style="text-align: center;"> </div> </div>

製品の特性

製品の状態	Liquid
保存方法	Shipped at 4°C. Upon delivery aliquot and store at -20°C. Avoid freeze / thaw cycles.
バッファー	Preservative: 0.1% Sodium Azide Constituents: PBS, pH 7.4
精製度	Immunogen affinity purified
特記事項 (精製)	Antisera was affinity purified by passage through two affinity columns, one cross-linked to AT-1A and the other with AT-1B, resulting in specificity to the sequence PSDNMSSSAKKPASCFFEVE (341-359).
ポリ/モノ	ポリクローナル
アイソタイプ	IgG

アプリケーション

Our [Abpromise guarantee](#) covers the use of **ab18801** in the following tested applications.

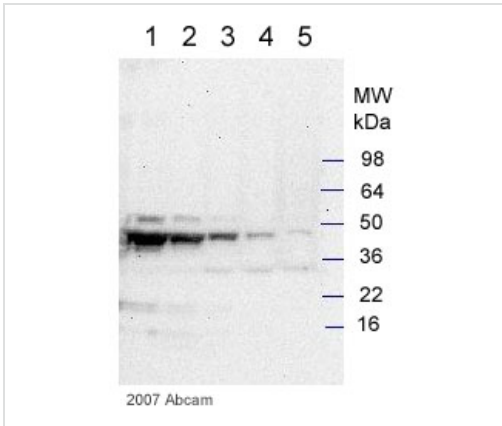
The application notes include recommended starting dilutions; optimal dilutions/concentrations should be determined by the end user.

アプリケーション	Abreviews	特記事項
WB	★★★★☆	Use at an assay dependent concentration. Detects a band of approximately 45 kDa (predicted molecular weight: 41 kDa).
IHC-Fr		Use at an assay dependent concentration.
IHC-FoFr		Use at an assay dependent concentration. PubMed: 19706421
IHC-P	★★★★★	1/100.
Electron Microscopy		1/500.

ターゲット情報

機能	Receptor for angiotensin II. Mediates its action by association with G proteins that activate a phosphatidylinositol-calcium second messenger system.
組織特異性	Liver, lung, adrenal and adrenocortical adenomas.
関連疾患	Defects in AGTR1 are a cause of renal tubular dysgenesis (RTD) [MIM:267430]. RTD is an autosomal recessive severe disorder of renal tubular development characterized by persistent fetal anuria and perinatal death, probably due to pulmonary hypoplasia from early-onset oligohydramnios (the Potter phenotype).
配列類似性	Belongs to the G-protein coupled receptor 1 family.
翻訳後修飾	C-terminal Ser or Thr residues may be phosphorylated.
細胞内局在	Cell membrane.

画像



Western blot - Angiotensin II Type 1 Receptor antibody (ab18801)

This image is courtesy of an Abreview submitted by Dr sudhish mishra

All lanes : Anti-Angiotensin II Type 1

Receptor antibody (ab18801) at 1/800 dilution

Lane 1 : Dog heart whole tissue lysate at 50 µg

Lane 2 : Dog heart whole tissue lysate at 25 µg

Lane 3 : Dog heart whole tissue lysate at 10 µg

Lane 4 : Dog heart whole tissue lysate at 5 µg

Lane 5 : Dog heart whole tissue lysate at 2 µg

Secondary

All lanes : HRP conjugated donkey polyclonal antibody

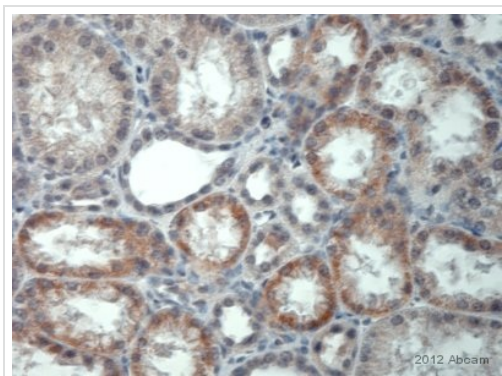
Performed under reducing conditions.

Predicted band size: 41 kDa

Observed band size: 45 kDa

Additional bands at: 32 kDa (possible non-specific binding)

Exposure time: 2 minutes

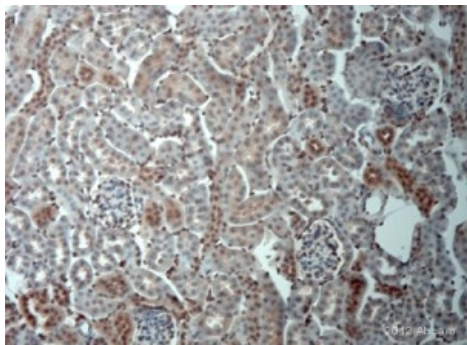


Immunohistochemistry (Formalin/PFA-fixed paraffin-embedded sections) - Anti-Angiotensin II Type 1 Receptor antibody (ab18801)

This image is courtesy of an Abreview submitted by Ms Andrea Dannullis

ab18801 staining Angiotensin II Type 1 in porcine kidney tissue by Immunohistochemistry (Formalin/PFA-fixed paraffin-embedded sections).

Tissue was fixed with paraformaldehyde and blocked with 5% BSA for 30 minutes at 20°C; antigen retrieval was by heat mediation with a citrate buffer. Samples were incubated with primary antibody (1/100 in PBS + Triton X-100 + goat serum) for 24 hours at 4°C. An HRP secondary antibody was used.



Immunohistochemistry (Formalin/PFA-fixed paraffin-embedded sections) - Anti-Angiotensin II Type 1 Receptor antibody (ab18801)

This image is courtesy of an Abreview submitted by Andrea Dannullis

ab18801 staining Angiotensin II Type 1 Receptor in Mouse kidney tissue sections by Immunohistochemistry (IHC-P - paraformaldehyde-fixed, paraffin-embedded sections). Tissue was fixed with paraformaldehyde and blocked with 5% BSA for 30 minutes at 20°C; antigen retrieval was by heat mediation in a citrate buffer. Samples were incubated with primary antibody (1/100 in PBS + Triton X100) for 24 hours at 4°C. An undiluted HRP-conjugated anti-rabbit polyclonal was used as the secondary antibody.

Please note: All products are "FOR RESEARCH USE ONLY AND ARE NOT INTENDED FOR DIAGNOSTIC OR THERAPEUTIC USE"

Our Abpromise to you: Quality guaranteed and expert technical support

- Replacement or refund for products not performing as stated on the datasheet
- Valid for 12 months from date of delivery
- Response to your inquiry within 24 hours
- We provide support in Chinese, English, French, German, Japanese and Spanish
- Extensive multi-media technical resources to help you
- We investigate all quality concerns to ensure our products perform to the highest standards

If the product does not perform as described on this datasheet, we will offer a refund or replacement. For full details of the Abpromise, please visit <http://www.abcam.co.jp/abpromise> or contact our technical team.

Terms and conditions

- Guarantee only valid for products bought direct from Abcam or one of our authorized distributors