


Product datasheet

Anti-Alpha-synuclein (phospho Y125) antibody ab10789

★★★★★ 5 Abreviews 6 References 画像数 4

製品の概要

製品名	Anti-Alpha-synuclein (phospho Y125) antibody
製品の詳細	Rabbit polyclonal to Alpha-synuclein (phospho Y125)
由来種	Rabbit
アプリケーション	適用あり: WB, ELISA, IHC-FoFr, ICC/IF
種交差性	交差が予測される動物種: Mouse, Rat, Human 
免疫原	Synthetic peptide corresponding to Human Alpha-synuclein aa 100 to the C-terminus conjugated to keyhole limpet haemocyanin. (Peptide available as ab17030)

製品の特性

製品の状態	Liquid
保存方法	Shipped at 4°C. Upon delivery aliquot and store at -20°C or -80°C. Avoid repeated freeze / thaw cycles.
バッファー	Preservative: 0.02% Sodium Azide Constituents: 1% BSA, PBS, pH 7.4
精製度	Immunogen affinity purified
ポリ/モノ	ポリクローナル
アイソタイプ	IgG

アプリケーション

Our [Abpromise guarantee](#) covers the use of **ab10789** in the following tested applications.

The application notes include recommended starting dilutions; optimal dilutions/concentrations should be determined by the end user.

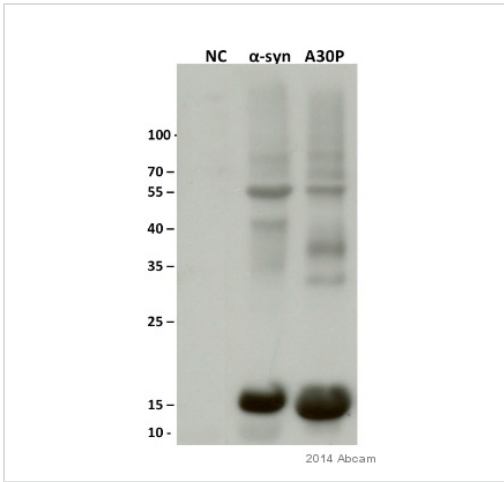
アプリケーション	Abreviews	特記事項

アプリ ケーション	Abreviews	特記事項
WB	★★★★★	Use at an assay dependent concentration. Detects a band of approximately 15 kDa (predicted molecular weight: 14 kDa). Can be blocked with Human Alpha-synuclein (phospho Y125) peptide (ab17030) .
ELISA		Use at an assay dependent concentration.
IHC- FoFr	★★★★★	1/100.
ICC/IF		Use at an assay dependent concentration. PubMed: 21114836

ターゲット情報

機能	May be involved in the regulation of dopamine release and transport. Induces fibrillization of microtubule-associated protein tau. Reduces neuronal responsiveness to various apoptotic stimuli, leading to a decreased caspase-3 activation.
組織特異性	Expressed principally in brain but is also expressed in low concentrations in all tissues examined except in liver. Concentrated in presynaptic nerve terminals.
関連疾患	Genetic alterations of SNCA resulting in aberrant polymerization into fibrils, are associated with several neurodegenerative diseases (synucleinopathies). SNCA fibrillar aggregates represent the major non A-beta component of Alzheimer disease amyloid plaque, and a major component of Lewy body inclusions. They are also found within Lewy body (LB)-like intraneuronal inclusions, glial inclusions and axonal spheroids in neurodegeneration with brain iron accumulation type 1. Parkinson disease 1 Parkinson disease 4 Dementia Lewy body
配列類似性	Belongs to the synuclein family.
ドメイン	The 'non A-beta component of Alzheimer disease amyloid plaque' domain (NAC domain) is involved in fibrils formation. The middle hydrophobic region forms the core of the filaments. The C-terminus may regulate aggregation and determine the diameter of the filaments.
翻訳後修飾	Phosphorylated, predominantly on serine residues. Phosphorylation by CK1 appears to occur on residues distinct from the residue phosphorylated by other kinases. Phosphorylation of Ser-129 is selective and extensive in synucleinopathy lesions. In vitro, phosphorylation at Ser-129 promoted insoluble fibril formation. Phosphorylated on Tyr-125 by a PTK2B-dependent pathway upon osmotic stress. Hallmark lesions of neurodegenerative synucleinopathies contain alpha-synuclein that is modified by nitration of tyrosine residues and possibly by dityrosine cross-linking to generated stable oligomers. Ubiquitinated. The predominant conjugate is the diubiquitinated form. Acetylation at Met-1 seems to be important for proper folding and native oligomeric structure.
細胞内局在	Cytoplasm, cytosol. Membrane. Nucleus. Cell junction, synapse. Secreted. Membrane-bound in dopaminergic neurons.

画像



Western blot - Anti-Alpha-synuclein (phospho Y125) antibody (ab10789)

This image is courtesy of an Abreview submitted by Blagovesta Popova

All lanes : Anti-Alpha-synuclein (phospho Y125) antibody (ab10789) at 1/1000 dilution

Lane 1 : Negative control cells harboring empty vector

Lane 2 : alpha synuclein expressed in *Saccharomyces cerevisiae*, strain BY4741 at 10 µg

Lane 3 : A30P-synuclein expressed in *Saccharomyces cerevisiae*, strain BY4741 at 10 µg/ml

Secondary

All lanes : HRP-conjugated goat anti-rabbit IgG polyclonal at 1/5000 dilution

Developed using the ECL technique.

Performed under non-reducing conditions.

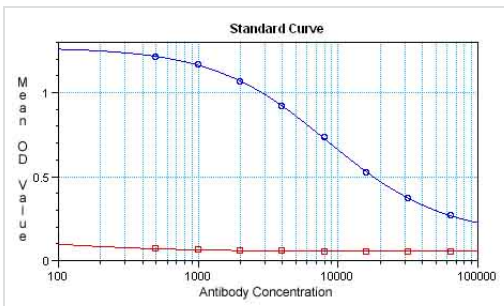
Predicted band size: 14 kDa

Observed band size: 15 kDa

Additional bands at: 37 kDa (possible non-specific binding), 55 kDa (possible non-specific binding)

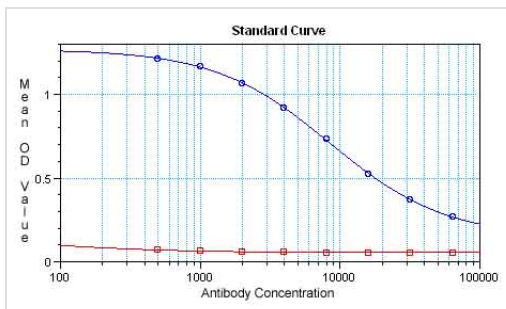
Exposure time: 3 minutes

Proteins purified by Ni²⁺-NTA pull-down.



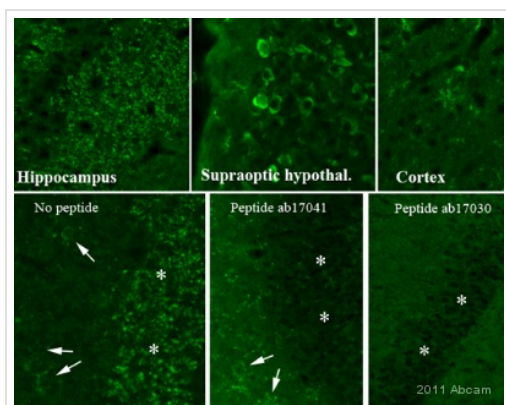
ELISA - alpha Synuclein (phospho Y125) antibody (ab10789)

ab10789 gave a positive result in ELISA against the immunising peptide (ab17030, blue line). It gave a negative result in ELISA against the non-modified equivalent peptide (ab17041, red line). This indicates that it is specific for the modified peptide. Not yet tested in other applications.



ELISA - Anti-Alpha-synuclein (phospho Y125)
antibody (ab10789)

ab10789 gave a positive result in ELISA against the immunising peptide (ab17030, blue line). It gave a negative result in ELISA against the non-modified equivalent peptide (ab17041, red line). This indicates that it is specific for the modified peptide. Not yet tested in other applications.



Immunohistochemistry (PFA perfusion fixed frozen sections) - Anti-Alpha-synuclein (phospho Y125)
antibody (ab10789)

This image is courtesy of an abreview submitted by Sophie Pezet, Laboratoire de Neurobiologie, France

IHC-FoFr image of ab10789 (1:100) staining on Rat brain sections. Images show staining of alpha synuclein (phospho Y125) in Hippocampus (Top Left), Hypothalamus (Top Centre) and Cortex (Top Right). Peptide pre-absorption was performed with the antibody to determine specificity to the modification on rat hippocampus sections. The antibody was incubated with No Peptide (Bottom Left), Unmodified peptide (Bottom Centre) and Modified Peptide (Bottom Right).

Please note: All products are "FOR RESEARCH USE ONLY AND ARE NOT INTENDED FOR DIAGNOSTIC OR THERAPEUTIC USE"

Our Abpromise to you: Quality guaranteed and expert technical support

- Replacement or refund for products not performing as stated on the datasheet
- Valid for 12 months from date of delivery
- Response to your inquiry within 24 hours
- We provide support in Chinese, English, French, German, Japanese and Spanish
- Extensive multi-media technical resources to help you
- We investigate all quality concerns to ensure our products perform to the highest standards

If the product does not perform as described on this datasheet, we will offer a refund or replacement. For full details of the Abpromise, please visit <http://www.abcam.co.jp/abpromise> or contact our technical team.

Terms and conditions

- Guarantee only valid for products bought direct from Abcam or one of our authorized distributors