

Product datasheet

Anti-Activin A Receptor Type IB antibody [EPR4815] ab109300

リコンビナント RabMAb®

1 Abreviews 5 References 画像数 7

製品の概要

製品名	Anti-Activin A Receptor Type IB antibody [EPR4815]
製品の詳細	Rabbit monoclonal [EPR4815] to Activin A Receptor Type IB
由来種	Rabbit
アプリケーション	適用あり: WB, IHC-P, ICC/IF 適用なし: Flow Cyt
種交差性	交差種: Mouse, Rat, Human
免疫原	Synthetic peptide within Human Activin A Receptor Type IB. The exact sequence is proprietary.
ポジティブ・コントロール	Human, mouse and rat brain tissue lysate; Human fetal kidney and liver tissue lysate; Human cervical carcinoma; Human kidney tissue; SH-SY5Y and U87-MG cell lysate.
特記事項	<p>Our RabMAb® technology is a patented hybridoma-based technology for making rabbit monoclonal antibodies. For details on our patents, please refer to RabMAb® patents</p> <p>We are constantly working hard to ensure we provide our customers with best in class antibodies. As a result of this work we are pleased to now offer this antibody in purified format. We are in the process of updating our datasheets. The purified format is designated 'PUR' on our product labels. If you have any questions regarding this update, please contact our Scientific Support team.</p> <p>This product is a recombinant rabbit monoclonal antibody.</p>

製品の特性

製品の状態	Liquid
保存方法	Shipped at 4°C. Store at +4°C short term (1-2 weeks). Upon delivery aliquot. Store at -20°C. Avoid freeze / thaw cycle. Stable for 12 months at -20°C.
バッファー	pH: 7.20 Preservative: 0.01% Sodium azide Constituents: 40% Glycerol, 59% PBS, 0.05% BSA
精製度	Protein A purified
ポリ/モノ	モノクローナル
クローン名	EPR4815

アイソタイプ

IgG

アプリケーション

Our [Abpromise guarantee](#) covers the use of **ab109300** in the following tested applications.

The application notes include recommended starting dilutions; optimal dilutions/concentrations should be determined by the end user.

アプリケーション	Abreviews	特記事項
WB		1/1000 - 1/10000. Detects a band of approximately 52 kDa (predicted molecular weight: 57 kDa).
IHC-P		1/1600. Perform heat mediated antigen retrieval before commencing with IHC staining protocol. See IHC antigen retrieval protocols . (Heat to 98°C, allow to cool for 10-20 minutes) For Unpurified use at 1/500 - 1/1000.
ICC/IF		1/100 - 1/250.

追加情報

Is unsuitable for Flow Cyt.

ターゲット情報

機能

On ligand binding, forms a receptor complex consisting of two type II and two type I transmembrane serine/threonine kinases. Type II receptors phosphorylate and activate type I receptors which autophosphorylate, then bind and activate SMAD transcriptional regulators. Phosphorylates TDP2.

組織特異性

Expressed in many tissues, most strongly in kidney, pancreas, brain, lung, and liver.

配列類似性

Belongs to the protein kinase superfamily. TKL Ser/Thr protein kinase family. TGFB receptor subfamily.

Contains 1 GS domain.

Contains 1 protein kinase domain.

翻訳後修飾

Autophosphorylated.

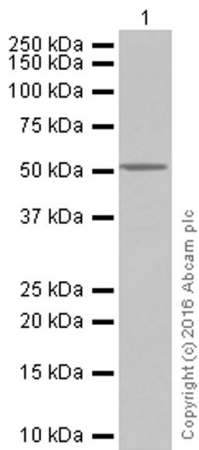
細胞内局在

Membrane.

製品の状態

There are 3 isoforms produced by alternative splicing. Isoform 1 also known as SKR2-1; isoform 2 as SKR2-2; isoform 3 as SKR2-3.

画像



Western blot - Anti-Activin A Receptor Type IB antibody [EPR4815] (ab109300)

Anti-Activin A Receptor Type IB antibody [EPR4815] (ab109300) at 1/1000 dilution (purified) + Human fetal kidney lysate at 15 µg

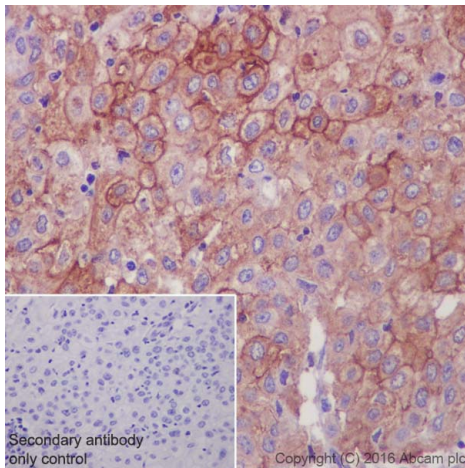
Secondary

Anti-Rabbit IgG (HRP), specific to the non-reduced form of IgG at 1/2000 dilution

Predicted band size: 57 kDa

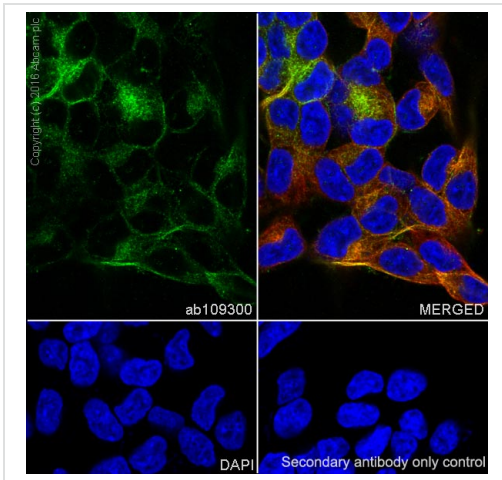
Observed band size: 52 kDa

Blocking/Diluting buffer 5% NFDm/TBST



Immunohistochemistry (Formalin/PFA-fixed paraffin-embedded sections) - Anti-Activin A Receptor Type IB antibody [EPR4815] (ab109300)

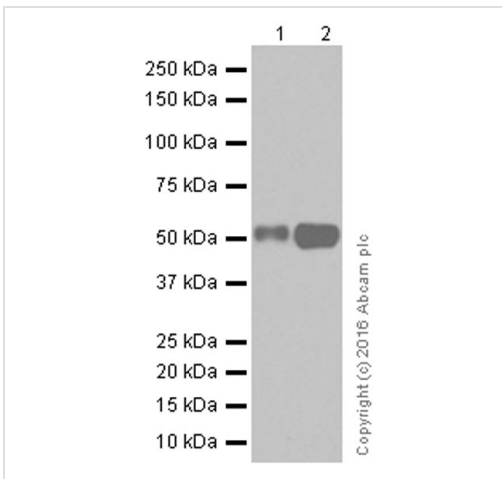
Immunohistochemical analysis of paraffin-embedded Human cervical carcinoma sections labelling Activin A Receptor Type IB with purified ab109300 at dilution of 1/600. The secondary antibody used was [ab97051](#); a goat anti-rabbit IgG H&L (HRP) at dilution of 1/500. The sample was counterstained with hematoxylin. Antigen retrieval was heat mediated using EDTA Buffer; pH 9.0. PBS was used instead of the primary antibody as the negative control and is shown in the inset.



Immunocytochemistry/ Immunofluorescence - Anti-Activin A Receptor Type IB antibody [EPR4815] (ab109300)

Immunocytochemistry/Immunofluorescence analysis of SH-SY5Y (Human neuroblastoma cell line from bone marrow) cells labelling Activin A Receptor Type IB with purified ab109300 at 1/250 (5.0 µg/mL). Cells were fixed with 4% Paraformaldehyde and permeabilized with 0.1% Triton X-100. ab150077, Alexa Fluor® 488-conjugated goat anti-rabbit IgG (1/1000, 2 µg/mL) was used as the secondary antibody. Cells were counter-stained with ab195889 Anti-Alpha Tubulin antibody [DM1A] (1/200, 2.5 µg/mL) - Microtubule Marker (Alexa Fluor® 594). DAPI (blue) was used as a nuclear counterstain.

Secondary Only Control: PBS was used instead of the primary antibody as the negative control.



Western blot - Anti-Activin A Receptor Type IB antibody [EPR4815] (ab109300)

All lanes : Anti-Activin A Receptor Type IB antibody [EPR4815] (ab109300) at 1/1000 dilution (purified)

Lane 1 : Mouse brain tissue lysate

Lane 2 : Rat brain tissue lysate

Lysates/proteins at 20 µg per lane.

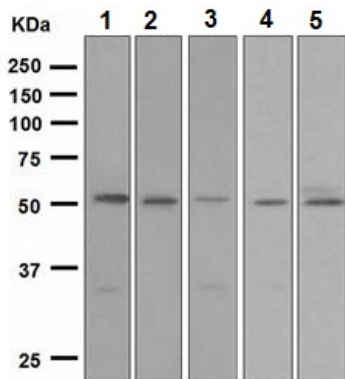
Secondary

All lanes : Goat Anti-Rabbit IgG H&L (HRP) (ab97051) at 1/20000 dilution

Predicted band size: 57 kDa

Observed band size: 52 kDa

Blocking/Diluting buffer 5% NFDm/TBST



Western blot - Anti-Activin A Receptor Type IB antibody [EPR4815] (ab109300)

All lanes : Anti-Activin A Receptor Type IB antibody [EPR4815] (ab109300) at 1/1000 dilution (unpurified)

Lane 1 : Human brain tissue lysate

Lane 2 : Human fetal kidney

Lane 3 : SH-SY5Y cell lysate

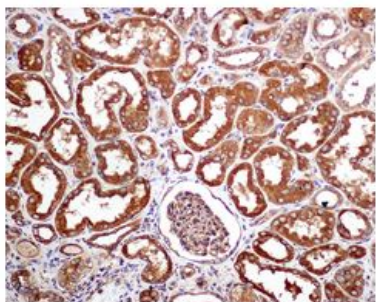
Lane 4 : U87-MG cell lysate

Lane 5 : Human fetal liver

Lysates/proteins at 10 µg per lane.

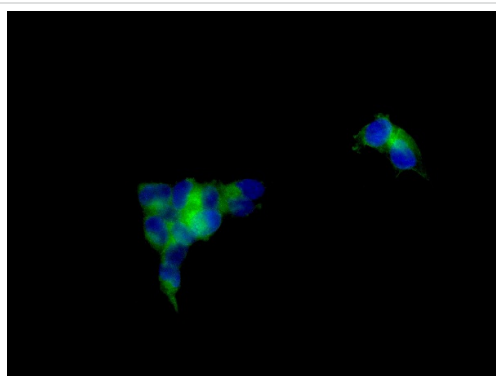
Predicted band size: 57 kDa

Observed band size: 52 kDa



Immunohistochemistry (Formalin/PFA-fixed paraffin-embedded sections) - Anti-Activin A Receptor Type IB antibody [EPR4815] (ab109300)

Immunohistochemical analysis of human kidney tissue sections labelling Activin A receptor type IB with unpurified ab109300 at 1/500 dilution.



Immunocytochemistry/ Immunofluorescence - Anti-Activin A Receptor Type IB antibody [EPR4815] (ab109300)

Immunocytochemistry/ Immunofluorescence analysis of 2% paraformaldehyde fixed (20 mins) SH-SY5Y cells labelling Activin A Receptor Type IB with unpurified ab109300 at a dilution of 1/100. Alexa Fluor488 goat anti-rabbit IgG was used as the secondary antibody.

Our Abpromise to you: Quality guaranteed and expert technical support

- Replacement or refund for products not performing as stated on the datasheet
- Valid for 12 months from date of delivery
- Response to your inquiry within 24 hours

- We provide support in Chinese, English, French, German, Japanese and Spanish
- Extensive multi-media technical resources to help you
- We investigate all quality concerns to ensure our products perform to the highest standards

If the product does not perform as described on this datasheet, we will offer a refund or replacement. For full details of the Abpromise, please visit <http://www.abcam.co.jp/abpromise> or contact our technical team.

Terms and conditions

- Guarantee only valid for products bought direct from Abcam or one of our authorized distributors