

## Product datasheet

# Anti-ATG4A antibody [EPR4122] ab108322

リコンビナント RabMAb®

画像数 3

### 製品の概要

製品名	Anti-ATG4A antibody [EPR4122]
製品の詳細	Rabbit monoclonal [EPR4122] to ATG4A
由来種	Rabbit
アプリケーション	<b>適用あり:</b> WB, IP, IHC-P <b>適用なし:</b> Flow Cyt or ICC
種交差性	<b>交差種:</b> Mouse, Rat, Human
免疫原	A synthetic peptide corresponding to residues in Human ATG4A
ポジティブ・コントロール	Fetal liver, HepG2, Jurkat and fetal brain lysates. Human brain tissue and Human skeletal muscle tissue.
特記事項	This product is a recombinant rabbit monoclonal antibody. Our RabMAb® technology is a patented hybridoma-based technology for making rabbit monoclonal antibodies. For details on our patents, please refer to <a href="#">RabMAb® patents</a>

### 製品の特性

製品の状態	Liquid
保存方法	Shipped at 4°C. Store at -20°C. Stable for 12 months at -20°C.
バッファー	PBS 49%, Sodium azide 0.01%, Glycerol 50%, BSA 0.05%
精製度	Tissue culture supernatant
ポリ/モノ	モノクローナル
クローン名	EPR4122
アイソタイプ	IgG

### アプリケーション

Our [Abpromise guarantee](#) covers the use of **ab108322** in the following tested applications.

The application notes include recommended starting dilutions; optimal dilutions/concentrations should be determined by the end user.

アプリケーション	Abreviews	特記事項
WB		1/1000 - 1/10000. Predicted molecular weight: 45 kDa.
IP		1/10 - 1/100.
IHC-P		1/100 - 1/250. Perform antigen retrieval.

**追加情報** Is unsuitable for Flow Cyt or ICC.

## ターゲット情報

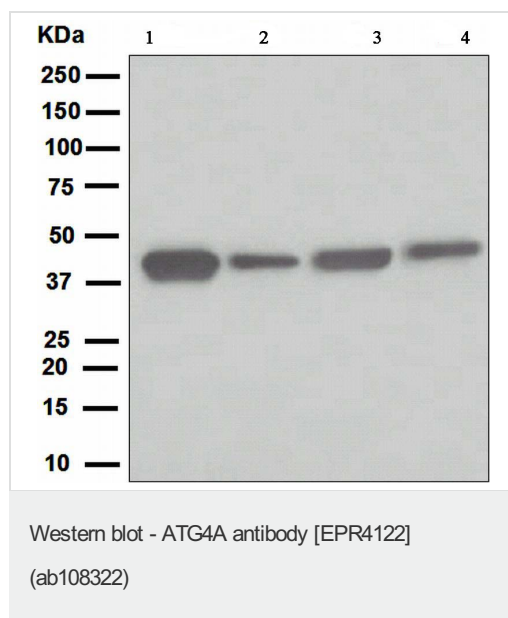
**機能** Cysteine protease required for autophagy, which cleaves the C-terminal part of either MAP1LC3, GABARAPL2 or GABARAP, allowing the liberation of form I. A subpopulation of form I is subsequently converted to a smaller form (form II). Form II, with a revealed C-terminal glycine, is considered to be the phosphatidylethanolamine (PE)-conjugated form, and has the capacity for the binding to autophagosomes. Preferred substrate is GABARAPL2 followed by MAP1LC3A and GABARAP.

**組織特異性** Widely expressed, at a low level, and the highest expression is observed in skeletal muscle and brain. Also detected in fetal liver.

**配列類似性** Belongs to the peptidase C54 family.

**細胞内局在** Cytoplasm.

## 画像



**All lanes :** Anti-ATG4A antibody [EPR4122]  
(ab108322) at 1/1000 dilution

**Lane 1 :** Fetal liver lysate

**Lane 2 :** HepG2 lysate

**Lane 3 :** Jurkat lysate

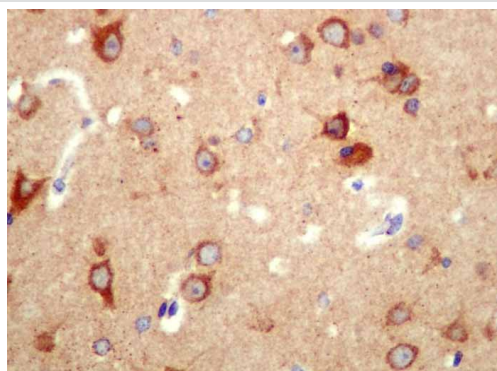
**Lane 4 :** Fetal brain lysate

Lysates/proteins at 10 µg per lane.

### Secondary

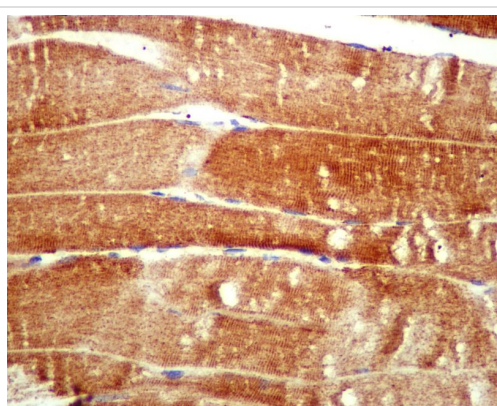
**All lanes :** Standard HRP labelled goat anti-rabbit at 1/2000 dilution

**Predicted band size:** 45 kDa



Immunohistochemical analysis of paraffin-embedded Human brain tissue using ab108322 at 1/100 dilution.

Immunohistochemistry (Formalin/PFA-fixed paraffin-embedded sections) - ATG4A antibody [EPR4122] (ab108322)



Immunohistochemical analysis of paraffin-embedded Human skeletal muscle tissue using ab108322 at 1/100 dilution.

Immunohistochemistry (Formalin/PFA-fixed paraffin-embedded sections) - ATG4A antibody [EPR4122] (ab108322)

**Please note:** All products are "FOR RESEARCH USE ONLY AND ARE NOT INTENDED FOR DIAGNOSTIC OR THERAPEUTIC USE"

### Our Abpromise to you: Quality guaranteed and expert technical support

- Replacement or refund for products not performing as stated on the datasheet
- Valid for 12 months from date of delivery
- Response to your inquiry within 24 hours
- We provide support in Chinese, English, French, German, Japanese and Spanish
- Extensive multi-media technical resources to help you
- We investigate all quality concerns to ensure our products perform to the highest standards

If the product does not perform as described on this datasheet, we will offer a refund or replacement. For full details of the Abpromise, please visit <http://www.abcam.co.jp/abpromise> or contact our technical team.

### Terms and conditions

- Guarantee only valid for products bought direct from Abcam or one of our authorized distributors