


Product datasheet

Anti-ATF3 antibody ab70005

1 References [画像数 1](#)

製品の概要

製品名	Anti-ATF3 antibody
製品の詳細	Rabbit polyclonal to ATF3
特異性	Detects endogenous levels of total ATF3 protein.
アプリケーション	適用あり: WB, ELISA
種交差性	交差種: Mouse, Human 交差が予測される動物種: Rat 
免疫原	Synthetic peptide derived from internal region of human ATF3.
ポジティブ・コントロール	RAW264.7 cell extract

製品の特性

製品の状態	Liquid
保存方法	Shipped at 4°C. Upon delivery aliquot and store at -20°C. Avoid freeze / thaw cycles.
バッファー	Preservative: 0.02% Sodium Azide Constituents: 50% Glycerol, PBS (without Mg ²⁺ and Ca ²⁺), 150mM Sodium chloride, pH 7.4
精製度	Immunogen affinity purified
特記事項 (精製)	Affinity-purified from rabbit antiserum by affinity-chromatography using epitope-specific immunogen.
ポリ/モノ	ポリクローナル
アイソタイプ	IgG

アプリケーション

Our [Abpromise guarantee](#) covers the use of **ab70005** in the following tested applications.

The application notes include recommended starting dilutions; optimal dilutions/concentrations should be determined by the end user.

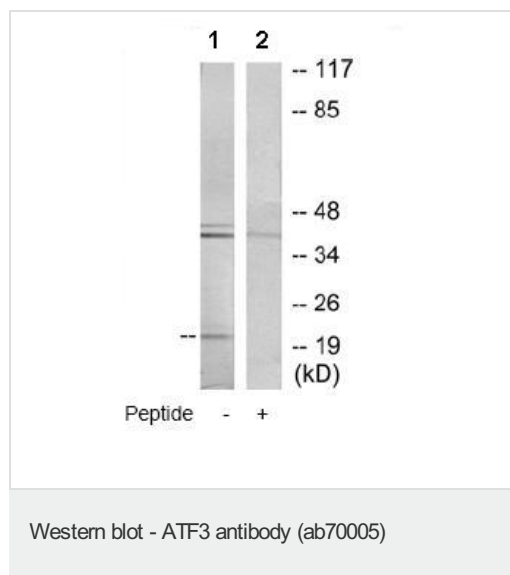
アプリケーション	Abreviews	特記事項
WB		1/500 - 1/1000. Detects a band of approximately 21 kDa (predicted molecular weight: 21 kDa).

アプリケーション	Abreviews	特記事項
ELISA		1/5000.

ターゲット情報

機能	This protein binds the cAMP response element (CRE) (consensus: 5'-GTGACGT[AC][AG]-3'), a sequence present in many viral and cellular promoters. Represses transcription from promoters with ATF sites. It may repress transcription by stabilizing the binding of inhibitory cofactors at the promoter. Isoform 2 activates transcription presumably by sequestering inhibitory cofactors away from the promoters.
配列類似性	Belongs to the bZIP family. ATF subfamily. Contains 1 bZIP domain.
細胞内局在	Nucleus.

画像



All lanes : Anti-ATF3 antibody (ab70005) at 1/500 dilution

Lane 1 : RAW264.7 cell extract

Lane 2 : RAW264.7 cell extract with immunising peptide at 10 µg

Lysates/proteins at 30 µg per lane.

Predicted band size : 21 kDa

Observed band size : 21 kDa

Additional bands at : 40 kDa, 42 kDa. We are unsure as to the identity of these extra bands.

Please note: All products are "FOR RESEARCH USE ONLY AND ARE NOT INTENDED FOR DIAGNOSTIC OR THERAPEUTIC USE"

Our Abpromise to you: Quality guaranteed and expert technical support

- Replacement or refund for products not performing as stated on the datasheet
- Valid for 12 months from date of delivery
- Response to your inquiry within 24 hours
- We provide support in Chinese, English, French, German, Japanese and Spanish
- Extensive multi-media technical resources to help you

- We investigate all quality concerns to ensure our products perform to the highest standards

If the product does not perform as described on this datasheet, we will offer a refund or replacement. For full details of the Abpromise, please visit <http://www.abcam.co.jp/abpromise> or contact our technical team.

Terms and conditions

- Guarantee only valid for products bought direct from Abcam or one of our authorized distributors