

## Product datasheet

# Anti-ATF1 antibody ab52845

画像数 1

### 製品の概要

製品名	Anti-ATF1 antibody
製品の詳細	Mouse polyclonal to ATF1
由来種	Mouse
アプリケーション	適用あり: WB
種交差性	交差種: Mouse
免疫原	Fusion protein: MEDSHKSNTT ETASQPGSTV AGPHVSQMH QVSSLSESEE SQDSSDSIGS SQKAHGILAR RPSYRKILKD LSSSEDRGRK GEGENPSISA ITSMSVPAPI , corresponding to amino acids 1-100 of Mouse ATF1 <a href="#">Run BLAST with ExPASy</a> <a href="#">Run BLAST with NCBI</a>

### 特記事項

This antibody was raised by a genetic immunization technique. Genetic immunization can be used to generate antibodies by directly delivering antigen-coding DNA into the animal, rather than injecting a protein or peptide (Tang et al. PubMed: 1545867; Chambers and Johnston PubMed 12910245; Barry and Johnston PubMed: 9234514). The animal's cells produce the protein, which stimulates the animal's immune system to produce antibodies against that particular protein. A vector coding for a partial fusion protein was used for genetic immunisation of a mouse and the resulting serum was tested in Western blot against an E.coli lysate containing that partial fusion protein. Genetic immunization offers enormous advantages over the traditional protein-based immunization method. DNA is faster, cheaper and easier to produce and can be produced by standard techniques readily amenable to automation. Furthermore, the antibodies generated by genetic immunization are usually of superior quality with regard to specificity, affinity and recognizing the native protein.

### 製品の特性

製品の状態	Liquid
保存方法	Shipped at 4°C. Upon delivery aliquot and store at -20°C. Avoid freeze / thaw cycles.
バッファー	Preservative: None Constituents: 50% Glycerol, Whole serum
精製度	Whole antiserum
一次抗体 備考	This antibody was raised by a genetic immunization technique. Genetic immunization can be used to generate antibodies by directly delivering antigen-coding DNA into the animal, rather

than injecting a protein or peptide (Tang et al. PubMed: 1545867; Chambers and Johnston PubMed 12910245; Barry and Johnston PubMed: 9234514). The animal's cells produce the protein, which stimulates the animal's immune system to produce antibodies against that particular protein. A vector coding for a partial fusion protein was used for genetic immunisation of a mouse and the resulting serum was tested in Western blot against an *E.coli* lysate containing that partial fusion protein. Genetic immunization offers enormous advantages over the traditional protein-based immunization method. DNA is faster, cheaper and easier to produce and can be produced by standard techniques readily amenable to automation. Furthermore, the antibodies generated by genetic immunization are usually of superior quality with regard to specificity, affinity and recognizing the native protein.

ポリ/モノ  
アイソタイプ

ポリクローナル  
IgG

## アプリケーション

Our [Abpromise guarantee](#) covers the use of **ab52845** in the following tested applications.

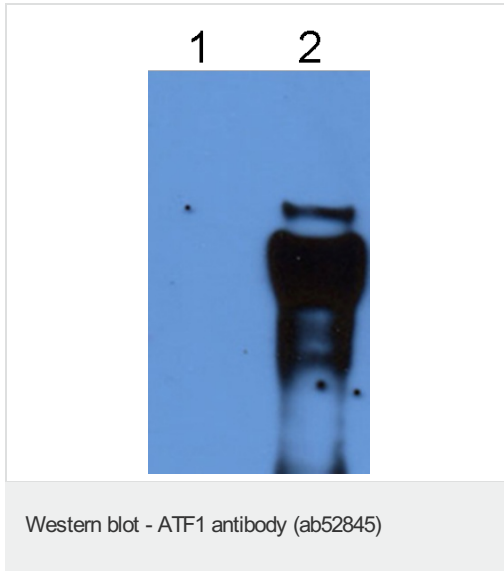
The application notes include recommended starting dilutions; optimal dilutions/concentrations should be determined by the end user.

アプリケーション	Abreviews	特記事項
WB		1/1000. Predicted molecular weight: 29 kDa. This antibody has been tested in Western blot against an <i>E.coli</i> lysate containing the partial recombinant fusion protein used as an immunogen. We have no data on detection of endogenous protein.

## ターゲット情報

機能	This protein binds the cAMP response element (CRE) (consensus: 5'-GTGACGT[AC][AG]-3'), a sequence present in many viral and cellular promoters. Binds to the Tax-responsive element (TRE) of HTLV-I. Mediates PKA-induced stimulation of CRE-reporter genes.
関連疾患	Defects in ATF1 may be a cause of angiomatoid fibrous histiocytoma (AFH) [MIM:612160]. A distinct variant of malignant fibrous histiocytoma that typically occurs in children and adolescents and is manifest by nodular subcutaneous growth. Characteristic microscopic features include lobulated sheets of histiocyte-like cells intimately associated with areas of hemorrhage and cystic pseudovascular spaces, as well as a striking cuffing of inflammatory cells, mimicking a lymph node metastasis. Note=Chromosomal aberrations involving ATF1 are found in patients with angiomatoid fibrous histiocytoma. Translocation t(12;16)(q13;p11.2) with FUS generates a chimeric ATF1/FUS protein. Translocation t(12;22)(q13;q12) with EWSR1 generates a chimeric ATF1/EWSR1 protein.
配列類似性	Belongs to the bZIP family. ATF subfamily. Contains 1 bZIP domain. Contains 1 KID (kinase-inducible) domain.
細胞内局在	Nucleus.

## 画像



**All lanes :** Anti-ATF1 antibody (ab52845) at 1/1000 dilution

**Lane 1 :** Total protein extract from E coli with ~50ng to 100 ng of an irrelevant antigen at 20 µg

**Lane 2 :** Total protein extract from E coli with ~50ng to 500ng of the antigen at 20 µg

**Secondary**

**All lanes :** Rabbit anti-mouse IgG + IgM, (H+L) horseradish peroxidase conjugated at 1/5000 dilution

**Predicted band size:** 29 kDa

The molecular weight of the band on the western blot does not correspond to the molecular weight of the natural protein because only a fragment of the gene is used and it is tagged

**Please note:** All products are "FOR RESEARCH USE ONLY AND ARE NOT INTENDED FOR DIAGNOSTIC OR THERAPEUTIC USE"

**Our Abpromise to you: Quality guaranteed and expert technical support**

- Replacement or refund for products not performing as stated on the datasheet
- Valid for 12 months from date of delivery
- Response to your inquiry within 24 hours
- We provide support in Chinese, English, French, German, Japanese and Spanish
- Extensive multi-media technical resources to help you
- We investigate all quality concerns to ensure our products perform to the highest standards

If the product does not perform as described on this datasheet, we will offer a refund or replacement. For full details of the Abpromise, please visit <http://www.abcam.co.jp/abpromise> or contact our technical team.

**Terms and conditions**

- Guarantee only valid for products bought direct from Abcam or one of our authorized distributors