


Product datasheet

Anti-ASK1 (phospho S966) antibody ab39402

画像数 2

製品の概要

製品名	Anti-ASK1 (phospho S966) antibody
製品の詳細	Rabbit polyclonal to ASK1 (phospho S966)
由来種	Rabbit
特異性	ab39402 detects endogenous levels of ASK1 only when phosphorylated at Serine 966.
アプリケーション	適用あり: ELISA, IHC-P
種交差性	交差種: Human 交差が予測される動物種: Mouse 
免疫原	Synthetic phosphopeptide: SIS _p LP, derived from Human ASK1 around the phosphorylation site of Serine 966
	Run BLAST with Run BLAST with

製品の特性

製品の状態	Liquid
保存方法	Shipped at 4°C. Upon delivery aliquot and store at -20°C. Avoid freeze / thaw cycles.
バッファー	Preservative: 0.02% Sodium Azide Constituents: 50% Glycerol, PBS, 150mM Sodium chloride, pH 7.4
精製度	Immunogen affinity purified
特記事項 (精製)	ab39402 was affinity purified from rabbit antiserum by affinity chromatography using epitope specific phosphopeptide. The antibody against non phosphopeptide was removed by chromatography using non phosphopeptide corresponding to the phosphorylation site.
ポリ/モノ	ポリクローナル
アイソタイプ	IgG

アプリケーション

Our [Abpromise guarantee](#) covers the use of **ab39402** in the following tested applications.

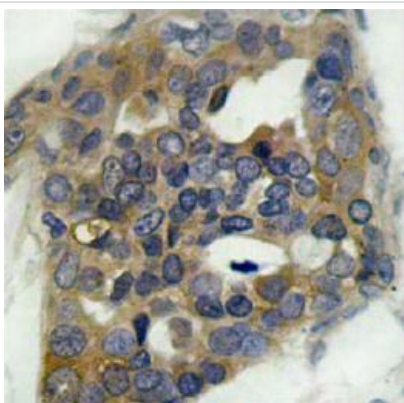
The application notes include recommended starting dilutions; optimal dilutions/concentrations should be determined by the end user.

アプリケーション	Abreviews	特記事項
ELISA		1/20000.
IHC-P		Use at an assay dependent concentration.

ターゲット情報

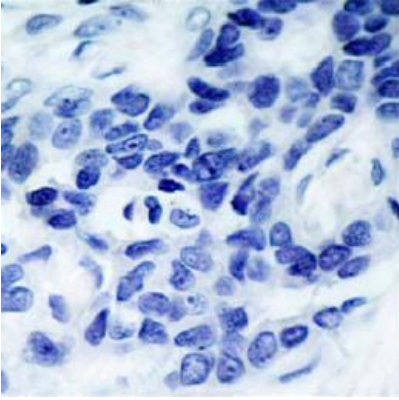
機能	Component of a protein kinase signal transduction cascade. Phosphorylates and activates MAP2K4 and MAP2K6, which in turn activate the JNK and p38 MAP kinases, respectively. Overexpression induces apoptotic cell death.
組織特異性	Abundantly expressed in heart and pancreas.
配列類似性	Belongs to the protein kinase superfamily. STE Ser/Thr protein kinase family. MAP kinase kinase kinase subfamily. Contains 1 protein kinase domain.
翻訳後修飾	Dephosphorylated and activated by PGAM5.

画像



ab39402, at a 1/100 dilution, staining human ASK1 in breast carcinoma tissue by Immunohistochemistry, Paraffin embedded tissue.

Immunohistochemistry (Paraffin-embedded sections)
- ASK1 (phospho S996) antibody (ab39402)



ab39402, at a 1/100 dilution, staining human ASK1 in breast carcinoma tissue (treated with synthesized phosphopeptide) by Immunohistochemistry, Paraffin embedded tissue.

Immunohistochemistry (Paraffin-embedded sections)
- ASK1 (phospho S996) antibody (ab39402)

Please note: All products are "FOR RESEARCH USE ONLY AND ARE NOT INTENDED FOR DIAGNOSTIC OR THERAPEUTIC USE"

Our Abpromise to you: Quality guaranteed and expert technical support

- Replacement or refund for products not performing as stated on the datasheet
- Valid for 12 months from date of delivery
- Response to your inquiry within 24 hours
- We provide support in Chinese, English, French, German, Japanese and Spanish
- Extensive multi-media technical resources to help you
- We investigate all quality concerns to ensure our products perform to the highest standards

If the product does not perform as described on this datasheet, we will offer a refund or replacement. For full details of the Abpromise, please visit <http://www.abcam.co.jp/abpromise> or contact our technical team.

Terms and conditions

- Guarantee only valid for products bought direct from Abcam or one of our authorized distributors