


Product datasheet

Anti-APH1a antibody ab62821

画像数 1

製品の概要

製品名	Anti-APH1a antibody
製品の詳細	Goat polyclonal to APH1a
由来種	Goat
特異性	ab62821 is expected to recognize both reported isoforms of APH1a (NP_001071096.1 and NP_057106.2).
アプリケーション	適用あり: WB, ELISA
種交差性	交差種: Human 交差が予測される動物種: Mouse, Rat 
免疫原	Synthetic peptide: C-HVTDRSDARLQYG , corresponding to internal sequence amino acids 58-70 of Human APH1a Run BLAST with Run BLAST with
ポジティブ・コントロール	Human Brain (Cerebral Cortex) lysate.

製品の特性

製品の状態	Liquid
保存方法	Shipped at 4°C. Upon delivery aliquot and store at -20°C or -80°C. Avoid repeated freeze / thaw cycles.
バッファー	Preservative: 0.02% Sodium Azide Constituents: 0.5% BSA, Tris buffered saline, pH 7.3
精製度	Immunogen affinity purified
特記事項 (精製)	ab62821 is purified from goat serum by ammonium sulphate precipitation followed by antigen affinity chromatography using the immunizing peptide.
ポリモノ	ポリクローナル
アイソタイプ	IgG

アプリケーション

Our [Abpromise guarantee](#) covers the use of **ab62821** in the following tested applications.

The application notes include recommended starting dilutions; optimal dilutions/concentrations should be determined by the end user.

アプリケーション	Abreviews	特記事項
----------	-----------	------

WB

ELISA

追加情報

Peptide ELISA: 1/128000.

WB: Use at a concentration of 0.05 - 0.1 µg/ml. Detects a band of approximately 29 kDa (predicted molecular weight: 29 kDa).

Not yet tested in other applications.

Optimal dilutions/concentrations should be determined by the end user.

ターゲット情報

機能

Essential subunit of the gamma-secretase complex, an endoprotease complex that catalyzes the intramembrane cleavage of integral proteins such as Notch receptors and APP (beta-amyloid precursor protein). It probably represents a stabilizing cofactor for the presenilin homodimer that promotes the formation of a stable complex.

組織特異性

Widely expressed. Expressed in leukocytes, lung, placenta, small intestine, liver, kidney, spleen, thymus, skeletal muscle, heart and brain. Isoform 1 and isoform 2 are nearly expressed at the same level.

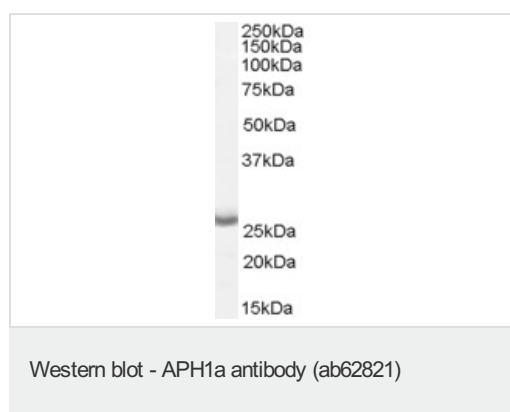
配列類似性

Belongs to the APH-1 family.

細胞内局在

Endoplasmic reticulum membrane. Golgi apparatus > Golgi stack membrane. Predominantly located in the endoplasmic reticulum and in the cis-Golgi.

画像



Anti-APH1a antibody (ab62821) at 0.05 µg/ml
+ Brain (Cerebral Cortex) lysate (in RIPA
buffer) at 35 µg

Predicted band size: 29 kDa

Observed band size: 29 kDa

Please note: All products are "FOR RESEARCH USE ONLY AND ARE NOT INTENDED FOR DIAGNOSTIC OR THERAPEUTIC USE"

Our Abpromise to you: Quality guaranteed and expert technical support

- Replacement or refund for products not performing as stated on the datasheet

- Valid for 12 months from date of delivery
- Response to your inquiry within 24 hours

- We provide support in Chinese, English, French, German, Japanese and Spanish
- Extensive multi-media technical resources to help you
- We investigate all quality concerns to ensure our products perform to the highest standards

If the product does not perform as described on this datasheet, we will offer a refund or replacement. For full details of the Abpromise, please visit <http://www.abcam.co.jp/abpromise> or contact our technical team.

Terms and conditions

- Guarantee only valid for products bought direct from Abcam or one of our authorized distributors