

## Product datasheet

# Anti-AP1S1 antibody ab103365

### 画像数 1

#### 製品の概要

|              |   |
|--------------|---|
| 製品名          | Anti-AP1S1 antibody   |
| 製品の詳細        | Rabbit polyclonal to AP1S1  |
| 由来種          | Rabbit  |
| アプリケーション     | 適用あり: WB  |
| 種交差性         | 交差種: Human  |
| 免疫原          | Synthetic peptide conjugated to KLH, corresponding to a region within N terminal amino acids 15-45 of Human AP1S1 |
| ポジティブ・コントロール | MDA-MB231 cell line lysates   |

#### 製品の特性

|          |  |
|----------|--|
| 製品の状態    | Liquid   |
| 保存方法     | Shipped at 4°C. Store at 4°C (up to 6 months). Store at -20°C long term.                         |
| バッファー    | Preservative: 0.09% Sodium Azide<br>Constituents: PBS  |
| 精製度      | Immunogen affinity purified  |
| 特記事項(精製) | This antibody is purified through a protein A column, followed by peptide affinity purification. |
| ポリ/モノ    | ポリクローナル  |
| アイソタイプ   | IgG  |

#### アプリケーション

Our [Abpromise guarantee](#) covers the use of **ab103365** in the following tested applications.

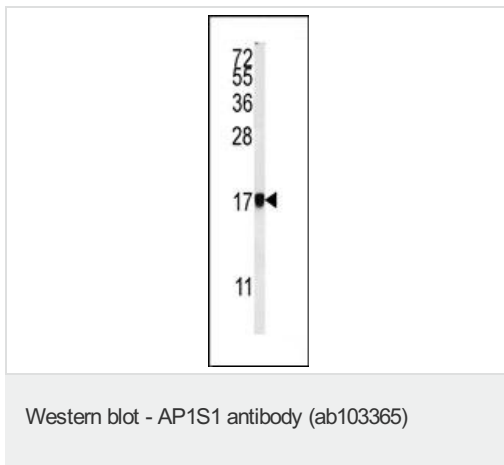
The application notes include recommended starting dilutions; optimal dilutions/concentrations should be determined by the end user.

| アプリケーション | Abreviews | 特記事項   |
|----------|-----------|--|
| WB       |           | 1/100 - 1/500. Predicted molecular weight: 19 kDa. |

#### ターゲット情報

|              |  |
|--------------|--|
| <b>機能</b>    | Subunit of clathrin-associated adaptor protein complex 1 that plays a role in protein sorting in the late-Golgi/trans-Golgi network (TGN) and/or endosomes. The AP complexes mediate both the recruitment of clathrin to membranes and the recognition of sorting signals within the cytosolic tails of transmembrane cargo molecules. |
| <b>組織特異性</b> | Widely expressed.  |
| <b>配列類似性</b> | Belongs to the adaptor complexes small subunit family.   |
| <b>細胞内局在</b> | Golgi apparatus. Cytoplasmic vesicle membrane. Membrane > clathrin-coated pit. Component of the coat surrounding the cytoplasmic face of coated vesicles located at the Golgi complex.   |

## 画像



Anti-AP1S1 antibody (ab103365) at 1/100 dilution + MDA-MB231 cell line lysate at 35 µg

**Predicted band size:** 19 kDa

**Please note:** All products are "FOR RESEARCH USE ONLY AND ARE NOT INTENDED FOR DIAGNOSTIC OR THERAPEUTIC USE"

## Our Abpromise to you: Quality guaranteed and expert technical support

- Replacement or refund for products not performing as stated on the datasheet
- Valid for 12 months from date of delivery
- Response to your inquiry within 24 hours
- We provide support in Chinese, English, French, German, Japanese and Spanish
- Extensive multi-media technical resources to help you
- We investigate all quality concerns to ensure our products perform to the highest standards

If the product does not perform as described on this datasheet, we will offer a refund or replacement. For full details of the Abpromise, please visit <http://www.abcam.co.jp/abpromise> or contact our technical team.

## Terms and conditions

- Guarantee only valid for products bought direct from Abcam or one of our authorized distributors