


Product datasheet

Anti-ALR antibody ab36376

画像数 2

製品の概要

製品名	Anti-ALR antibody
製品の詳細	Rabbit polyclonal to ALR
由来種	Rabbit
アプリケーション	適用あり: WB, ICC/IF
種交差性	交差種: Mouse, Human 交差が予測される動物種: Rat, Xenopus laevis 
免疫原	Synthetic peptide conjugated to KLH derived from within residues 150 to the C-terminus of Human ALR.Immunogen の所有権に関して (Peptide available as <a href="#">ab36485</a> .)
ポジティブ・コントロール	<div style="border: 1px solid #ccc; padding: 5px; display: inline-block;"> <a href="#">ウエスタン・ブロット用ポジティブコントロール Recombinant Human ALR protein &gt;</a> </div> This antibody gave a positive signal in mouse liver and mouse testis tissue lysates.

製品の特性

製品の状態	Liquid
保存方法	Shipped at 4°C. Store at +4°C short term (1-2 weeks). Upon delivery aliquot. Store at -20°C or -80°C. Avoid freeze / thaw cycle.
バッファー	Preservative: 0.02% Sodium Azide Constituents: 1% BSA, PBS, pH 7.4
精製度	Immunogen affinity purified
ポリ/モノ	ポリクローナル
アイソタイプ	IgG

アプリケーション

Our [Abpromise guarantee](#) covers the use of **ab36376** in the following tested applications.

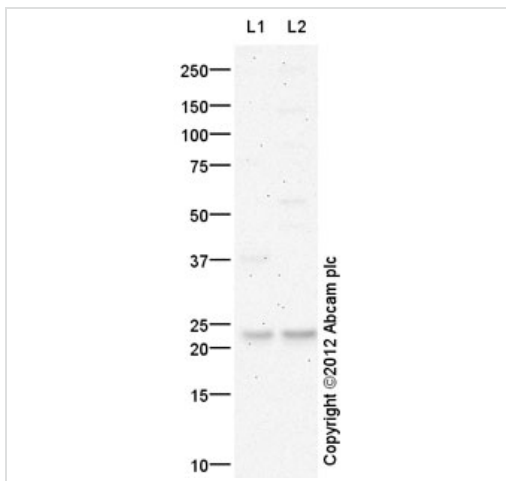
The application notes include recommended starting dilutions; optimal dilutions/concentrations should be determined by the end user.

アプリケーション	Abreviews	特記事項
WB		Use a concentration of 1 µg/ml. Detects a band of approximately 23 kDa (predicted molecular weight: 23 kDa).
ICC/IF		Use a concentration of 1 µg/ml.

## ターゲット情報

機能	<p>Isoform 1: FAD-dependent sulfhydryl oxidase. Within the mitochondrial intermembrane space, participates in a chain of disulfide exchange reactions with MIA40, that generate disulfide bonds in a number of resident proteins with twin Cx3C and Cx9C motifs.</p> <p>Isoform 2: May act as an autocrine hepatotrophic growth factor promoting liver regeneration.</p>
組織特異性	Ubiquitously expressed. Highest expression in the testis and liver and low expression in the muscle.
関連疾患	Defects in GFER are a cause of mitochondrial progressive myopathy with congenital cataract hearing loss and developmental delay (MPMCHD) [MIM:613076]; also called combined mitochondrial complex deficiency.
配列類似性	Contains 1 ERV/ALR sulfhydryl oxidase domain.
細胞内局在	Mitochondrion intermembrane space and Cytoplasm. Secreted.

## 画像



Western blot - Anti-ALR antibody (ab36376)

**All lanes** : Anti-ALR antibody (ab36376) at 1  $\mu\text{g/ml}$

**Lane 1** : Liver (Mouse) Tissue Lysate

**Lane 2** : Testis (Mouse) Tissue Lysate

Lysates/proteins at 10  $\mu\text{g}$  per lane.

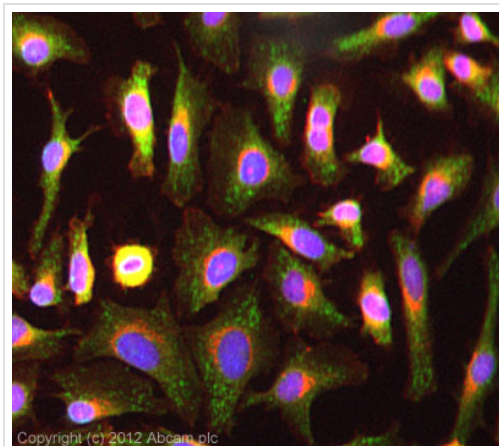
#### Secondary

**All lanes** : Goat Anti-Rabbit IgG H&L (HRP) preadsorbed (ab97080) at 1/5000 dilution

**Predicted band size:** 23 kDa

**Observed band size:** 23 kDa

Abcam recommends using milk as the blocking agent. Abcam welcomes customer feedback and would appreciate any comments regarding this product and the data presented above.



Immunocytochemistry/ Immunofluorescence - Anti-ALR antibody (ab36376)

ICC/IF image of ab36376 stained HeLa cells. The cells were 100% methanol fixed (5 min) and then incubated in 1%BSA / 10% normal goat serum / 0.3M glycine in 0.1% PBS-Tween for 1h to permeabilise the cells and block non-specific protein-protein interactions. The cells were then incubated with the antibody (ab36376, 5 $\mu\text{g/ml}$ ) overnight at +4°C. The secondary antibody (green) was ab96899, DyLight® 488 goat anti-rabbit IgG (H+L) used at a 1/250 dilution for 1h. Alexa Fluor® 594 WGA was used to label plasma membranes (red) at a 1/200 dilution for 1h. DAPI was used to stain the cell nuclei (blue) at a concentration of 1.43 $\mu\text{M}$ . This antibody also gave a positive result in 4% PFA fixed (10 min) HepG2 and MCF7 cells at 5 $\mu\text{g/ml}$ , and in 100% methanol fixed (5 min) MCF7 cells at 5 $\mu\text{g/ml}$ .

---

## **Our Abpromise to you: Quality guaranteed and expert technical support**

---

- Replacement or refund for products not performing as stated on the datasheet
- Valid for 12 months from date of delivery
- Response to your inquiry within 24 hours
  
- We provide support in Chinese, English, French, German, Japanese and Spanish
- Extensive multi-media technical resources to help you
- We investigate all quality concerns to ensure our products perform to the highest standards

If the product does not perform as described on this datasheet, we will offer a refund or replacement. For full details of the Abpromise, please visit <http://www.abcam.co.jp/abpromise> or contact our technical team.

## **Terms and conditions**

---

- Guarantee only valid for products bought direct from Abcam or one of our authorized distributors