

## Product datasheet

# Anti-ALDH3A1 antibody ab103895

### 画像数 2

#### 製品の概要

製品名	Anti-ALDH3A1 antibody
製品の詳細	Goat polyclonal to ALDH3A1
由来種	Goat
アプリケーション	<b>適用あり:</b> IHC-P, WB
種交差性	<b>交差種:</b> Mouse, Human
免疫原	Synthetic peptide: RYPSPAKMTQH by a Cysteine residue linker, corresponding to C terminal amino acids 442-453 of Human ALDH3A1 (NP_000682.3)
	<a href="#">Run BLAST with</a> <a href="#">Run BLAST with</a>
ポジティブ・コントロール	Mouse Eye Lysate

#### 製品の特性

製品の状態	Liquid
保存方法	Shipped at 4°C. Upon delivery aliquot and store at -20°C. Avoid freeze / thaw cycles.
バッファー	Preservative: 0.02% Sodium Azide Constituents: 0.5% BSA, Tris buffered saline, pH 7.3
精製度	Immunogen affinity purified
特記事項(精製)	Purified from goat serum by ammonium sulphate precipitation followed by antigen affinity chromatography using the immunizing peptide.
ポリ/モノ	ポリクローナル
アイソタイプ	IgG

#### アプリケーション

Our [Abpromise guarantee](#) covers the use of **ab103895** in the following tested applications.

The application notes include recommended starting dilutions; optimal dilutions/concentrations should be determined by the end user.

アプリケーション	Abreviews	特記事項
IHC-P		Use a concentration of 3 - 5 µg/ml. Perform heat mediated antigen retrieval with citrate buffer pH 6 before commencing with IHC staining protocol.
WB		Use a concentration of 0.01 - 0.03 µg/ml. Predicted molecular weight: 50 kDa.

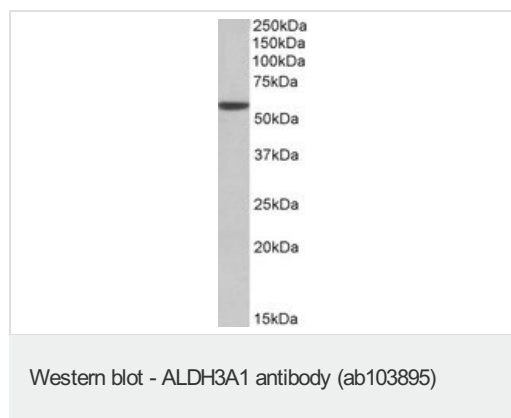
## ターゲット情報

機能	ALDHs play a major role in the detoxification of alcohol-derived acetaldehyde. They are involved in the metabolism of corticosteroids, biogenic amines, neurotransmitters, and lipid peroxidation. This protein preferentially oxidizes aromatic aldehyde substrates. It may play a role in the oxidation of toxic aldehydes.
組織特異性	High levels in stomach, esophagus and lung; low level in the liver and kidney.
配列類似性	Belongs to the aldehyde dehydrogenase family.
細胞内局在	Cytoplasm.

## 画像



**ab103897** (3.8µg/ml) staining of paraffin embedded Human Lung following Steamed antigen retrieval with citrate buffer pH 6 and AP-staining strong staining of the respiratory epithelium of the tracheal wall.



Anti-ALDH3A1 antibody (ab103895) at 0.01 µg/ml + Mouse Eye Lysate in RIPA buffer at 35 µg

Developed using the ECL technique.

**Predicted band size: 50 kDa**

**Please note:** All products are "FOR RESEARCH USE ONLY AND ARE NOT INTENDED FOR DIAGNOSTIC OR THERAPEUTIC USE"

## **Our Abpromise to you: Quality guaranteed and expert technical support**

---

- Replacement or refund for products not performing as stated on the datasheet
- Valid for 12 months from date of delivery
- Response to your inquiry within 24 hours
  
- We provide support in Chinese, English, French, German, Japanese and Spanish
- Extensive multi-media technical resources to help you
- We investigate all quality concerns to ensure our products perform to the highest standards

If the product does not perform as described on this datasheet, we will offer a refund or replacement. For full details of the Abpromise, please visit <http://www.abcam.co.jp/abpromise> or contact our technical team.

## **Terms and conditions**

---

- Guarantee only valid for products bought direct from Abcam or one of our authorized distributors