

Product datasheet

Anti-ADAM28 antibody - Aminoterminal end ab28292

★★★★★ 2 Abreviews 1 References 画像数 2

製品の概要

製品名	Anti-ADAM28 antibody - Aminoterminal end
製品の詳細	Rabbit polyclonal to ADAM28 - Aminoterminal end
由来種	Rabbit
特異性	ab28292 recognises the Aminoterminal region of ADAM28.
アプリケーション	適用あり: WB, ICC/IF
種交差性	交差種: Human
免疫原	Synthetic peptide corresponding to the Propeptide domain of human ADAM28. Immunogen の所有権に関して (Peptide available as ab41223 .)
ポジティブ・コントロール	Western blot: RD (rhabdomyosarcoma, human, embryonal, epithelial) cell lysates and A-431 (epidermoid carcinoma, human) cell lysates

製品の特性

製品の状態	Liquid
保存方法	Shipped at 4°C. Store at +4°C short term (1-2 weeks). Upon delivery aliquot. Store at -20°C long term.
バッファー	Preservative: 0.05% Sodium Azide Constituents: 50% Glycerol
精製度	Immunogen affinity purified
ポリ/モノ	ポリクローナル
アイソタイプ	IgG

アプリケーション

Our [Abpromise guarantee](#) covers the use of **ab28292** in the following tested applications.

The application notes include recommended starting dilutions; optimal dilutions/concentrations should be determined by the end user.

アプリケーション	Abreviews	特記事項
WB	★★★★★	1/1000 - 1/5000. Predicted molecular weight: 87 kDa. 1/1000 when using colorimetric substrates such as BCIP/NBT - 1/5000, when using chemiluminescent substrates. Note: for the full length ADAM28: glycosylation and cyteine-rich regions make the reduced protein run at 114 kDa unprocessed and 84 kDa processed forms. For the soluble ADAM28, under reducing conditions it is seen as a 92 kDa zymogen and 68 kDa furin processed form. Dilution optimised using Chromogenic detection.
ICC/IF	★★★★☆	Use at an assay dependent concentration.

ターゲット情報

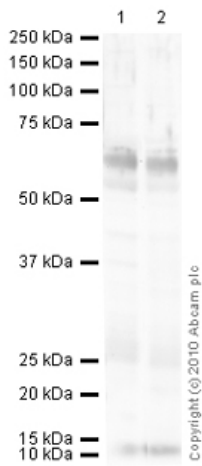
関連性

ADAM28, also known as eMDCII, MDC-Ls and TECADAM, was first described in lymphocytes, also in Thymic Endothelial Cells (TECADAM), as well as in the epididymus. Later works describe two forms of ADAM28: ADAM28-S and ADAM28-L (short and long forms). The short form is a soluble, alternatively spliced form lacking the transmembrane and cytoplasmic domains. Message levels of the short form were found to be much lower than the long form in the tissues studied, but these may be tissue-specific differences. In humans, ADAM28 is reported in lymphocytes by some authors and to be absent from mature lymphocytes by others. The thyroid, lung, trachea, esophagus, and stomach have been shown to express human ADAM28 message. Knockout mice lacking B cells and T cells express ADAM28 message in the thyroid, lung, trachea, esophagus, and stomach. A member of the metalloproteinase family containing disintegrin-like domains (ADAMs) the functions of ADAM28 are still poorly understood. ADAM28 contains the canonical HExxHxxxxH zinc metalloproteinase motif, and has been shown to be proteolytically active. Other ADAMs family members (ADAM10, ADAM17) have been more thoroughly studied and are known to play key roles in inflammation, growth factor maturation and release, and a wide range of other functions. The full length ADAM28 (ADAM28 Long) sequence codes for a 775 amino acid protein with a predicted mass is 87.2 kDa, and a pI of 6.50. The soluble ADAM28 (ADAM-28 Short) is a 540 amino acid sequence, with a predicted mass of 61.3 kDa, and a pI of 6.58. Other forms of ADAM28 have been reported with slightly different carboxyterminal regions. ADAM28 may play a role in the adhesive and proteolytic events that occur during lymphocyte emigration or may function in ectodomain shedding of lymphocyte surface target proteins, such as FASL and CD40L. It may be involved in sperm maturation. There are 2 isoforms of ADAM28: one short secreted and one long membrane bound.

細胞内局在

Cell Membrane and Secreted

画像



Western blot - Anti-ADAM28 antibody -
Aminoterminal end (ab28292)

All lanes : Anti-ADAM28 antibody -

Aminoterminal end (ab28292) at 1 µg/ml

Lane 1 : Human lymph node tissue lysate -
total protein (ab29871)

Lane 2 : Human small intestine tissue lysate -
total protein (ab29276)

Lysates/proteins at 10 µg per lane.

Secondary

All lanes : Goat Anti-Rabbit IgG H&L (HRP)
preadsorbed (ab97080) at 1/5000 dilution

Developed using the ECL technique.

Performed under reducing conditions.

Predicted band size: 87 kDa

Observed band size: 66 kDa

Additional bands at: 12 kDa. We are unsure
as to the identity of these extra bands.

Exposure time: 12 minutes

The band observed at 66 kDa could potentially
be a cleaved form of ADAM28 due to the
presence of an 18 amino acid signal peptide
and a 180 amino acid propeptide.



Western blot - Anti-ADAM28 antibody -
Aminoterminal end (ab28292)
Image courtesy of an anonymous Abreview.

Anti-ADAM28 antibody - Aminoterminal end
(ab28292) at 1/1000 dilution + whole cell
lysate prepared from EL4 cells at 100000
cells

Secondary

HRP conjugated donkey anti-rabbit polyclonal
at 1/2000 dilution

Developed using the ECL technique.

Performed under reducing conditions.

Predicted band size: 87 kDa

Observed band size: 90 kDa

Exposure time: 30 seconds

Blocked with 5% milk for 1 hour at 24°C.

Please note: All products are "FOR RESEARCH USE ONLY AND ARE NOT INTENDED FOR DIAGNOSTIC OR THERAPEUTIC USE"

Our Abpromise to you: Quality guaranteed and expert technical support

- Replacement or refund for products not performing as stated on the datasheet
- Valid for 12 months from date of delivery
- Response to your inquiry within 24 hours
- We provide support in Chinese, English, French, German, Japanese and Spanish
- Extensive multi-media technical resources to help you
- We investigate all quality concerns to ensure our products perform to the highest standards

If the product does not perform as described on this datasheet, we will offer a refund or replacement. For full details of the Abpromise, please visit <http://www.abcam.co.jp/abpromise> or contact our technical team.

Terms and conditions

- Guarantee only valid for products bought direct from Abcam or one of our authorized distributors