

Product datasheet

Anti-ACVRL1 antibody ab93595

画像数 2

製品の概要

製品名	Anti-ACVRL1 antibody
製品の詳細	Rabbit polyclonal to ACVRL1
アプリケーション	適用あり: WB, IHC-P
種交差性	交差種: Human
免疫原	Synthetic peptide corresponding to Human ACVRL1 (C terminal). Database link: NM_020661
ポジティブ・コントロール	Human hepatocellular carcinoma tissue and Human fetal heart lysate

製品の特性

製品の状態	Liquid
保存方法	Shipped at 4°C. Upon delivery aliquot and store at -20°C. Avoid freeze / thaw cycles.
バッファー	Preservative: 0.02% Sodium Azide Constituents: PBS, pH 7.4
精製度	Protein A purified
ポリ/モノ	ポリクローナル
アイソタイプ	IgG

アプリケーション

Our [Abpromise guarantee](#) covers the use of **ab93595** in the following tested applications.

The application notes include recommended starting dilutions; optimal dilutions/concentrations should be determined by the end user.

アプリケーション	Abreviews	特記事項
WB		
IHC-P		

追加情報

IHC-P: 1/100 - 1/300.
WB: 1/200 - 1/5000. Predicted molecular weight: 56 kDa.

Not yet tested in other applications.

Optimal dilutions/concentrations should be determined by the end user.

ターゲット情報

機能

On ligand binding, forms a receptor complex consisting of two type II and two type I transmembrane serine/threonine kinases. Type II receptors phosphorylate and activate type I receptors which autophosphorylate, then bind and activate SMAD transcriptional regulators. Receptor for TGF-beta. May bind activin as well.

関連疾患

Defects in ACVRL1 are the cause of hereditary hemorrhagic telangiectasia type 2 (HHT2) [MIM:600376]; also known as Osler-Rendu-Weber syndrome 2 (ORW2). HHT2 is an autosomal dominant multisystemic vascular dysplasia, characterized by recurrent epistaxis, mucocutaneous telangiectases, gastro-intestinal hemorrhage, and pulmonary, cerebral and hepatic arteriovenous malformations; all secondary manifestations of the underlying vascular dysplasia.

配列類似性

Belongs to the protein kinase superfamily. TKL Ser/Thr protein kinase family. TGFB receptor subfamily.

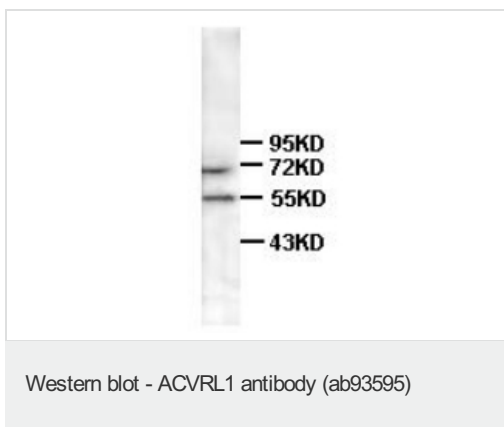
Contains 1 GS domain.

Contains 1 protein kinase domain.

細胞内局在

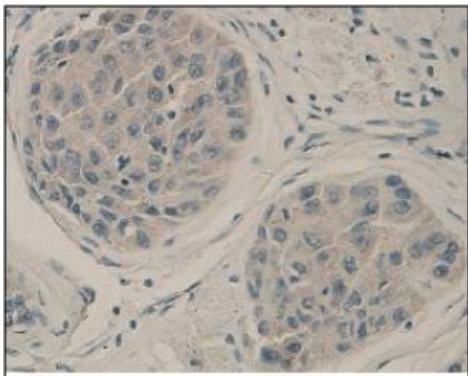
Membrane.

画像



Anti-ACVRL1 antibody (ab93595) at 1/200 dilution + Human fetal heart lysate

Predicted band size : 56 kDa



Immunohistochemical staining of formalin-fixed paraffin-embedded hepatocellular liver carcinoma using ab93595 at 1/100 dilution.

Immunohistochemistry (Formalin/PFA-fixed paraffin-embedded sections) - ACVRL1 antibody (ab93595)

Please note: All products are "FOR RESEARCH USE ONLY AND ARE NOT INTENDED FOR DIAGNOSTIC OR THERAPEUTIC USE"

Our Abpromise to you: Quality guaranteed and expert technical support

- Replacement or refund for products not performing as stated on the datasheet
- Valid for 12 months from date of delivery
- Response to your inquiry within 24 hours
- We provide support in Chinese, English, French, German, Japanese and Spanish
- Extensive multi-media technical resources to help you
- We investigate all quality concerns to ensure our products perform to the highest standards

If the product does not perform as described on this datasheet, we will offer a refund or replacement. For full details of the Abpromise, please visit <http://www.abcam.co.jp/abpromise> or contact our technical team.

Terms and conditions

- Guarantee only valid for products bought direct from Abcam or one of our authorized distributors