


Product datasheet

Anti-ACAT2 antibody ab66259

2 References 画像数 2

製品の概要

製品名	Anti-ACAT2 antibody
製品の詳細	Rabbit polyclonal to ACAT2
アプリケーション	適用あり: WB, ELISA, IHC-P
種交差性	交差種: Human 交差が予測される動物種: Mouse, Rat, Rabbit, Horse, Guinea pig, Cow, Cat, Dog 
免疫原	Synthetic peptide: SILCDGLTDA FHNCHMGITA ENVAKKWQVS REDQDKVAVL SQNRTENAQK, corresponding to a region within internal sequence amino acids 145-194 of Human ACAT2 Run BLAST with ExPASy Run BLAST with NCBI
ポジティブ・コントロール	K562 cell lysate. Human liver tissue.

製品の特性

製品の状態	Liquid
保存方法	Shipped at 4°C. Upon delivery aliquot and store at -20°C. Avoid freeze / thaw cycles.
バッファー	Preservative: None Constituents: 2% Sucrose, PBS
精製度	Protein A purified
ポリ/モノ	ポリクローナル
アイソタイプ	IgG

アプリケーション

Our [Abpromise guarantee](#) covers the use of **ab66259** in the following tested applications.

The application notes include recommended starting dilutions; optimal dilutions/concentrations should be determined by the end user.

アプリケーション	Abreviews	特記事項
WB		Use a concentration of 1 µg/ml. Detects a band of approximately 41 kDa (predicted molecular weight: 41 kDa). Good results were obtained when blocked with 5% non-fat dry milk in 0.05% PBS-T.

アプリ ケーション	Abreviews	特記事項
--------------	-----------	------

ELISA Use at an assay dependent concentration.
Titre using peptide based assay 1/12500.

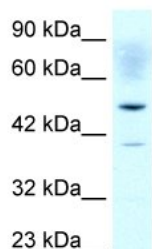
IHC-P Use a concentration of 4 - 8 µg/ml.

ターゲット情報

配列類似性 Belongs to the thiolase family.

細胞内局在 Cytoplasm.

Anti-ACAT2 antibody 画像



Western blot - ACAT2 antibody (ab66259)

Anti-ACAT2 antibody (ab66259) at 1 µg/ml +
K562 cell lysate at 10 µg

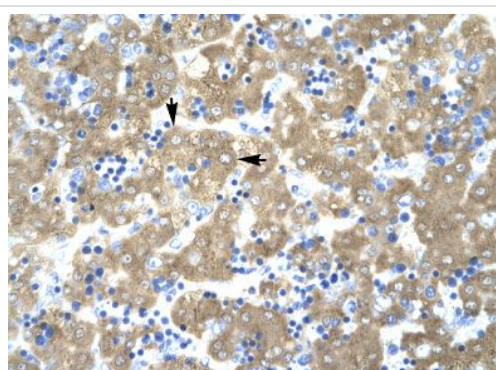
Secondary

HRP conjugated anti-Rabbit IgG at 1/50000
dilution

Predicted band size : 41 kDa

Observed band size : 41 kDa

Additional bands at : 52 kDa. We are
unsure as to the identity of these extra
bands. Antibody diluted in 5% skim milk / PBS
buffer. Gel concentration 12%.



Immunohistochemistry (Formalin/PFA-fixed paraffin-
embedded sections) - ACAT2 antibody (ab66259)

Immunohistochemistry (Formalin/PFA-fixed
paraffin-embedded sections) analysis of
human liver tissue labelling ACAT2 with
ab66259 at 4-8µg/ml. Arrows indicate
positively labelled hepatocytes. Magnification:
400X.

Please note: All products are "FOR RESEARCH USE ONLY AND ARE NOT INTENDED FOR DIAGNOSTIC OR THERAPEUTIC USE"

Our Abpromise to you: Quality guaranteed and expert technical support

- Replacement or refund for products not performing as stated on the datasheet
- Valid for 12 months from date of delivery
- Response to your inquiry within 24 hours

- We provide support in Chinese, English, French, German, Japanese and Spanish
- Extensive multi-media technical resources to help you
- We investigate all quality concerns to ensure our products perform to the highest standards

If the product does not perform as described on this datasheet, we will offer a refund or replacement. For full details of the Abpromise, please visit <http://www.abcam.co.jp/abpromise> or contact our technical team.

Terms and conditions

- Guarantee only valid for products bought direct from Abcam or one of our authorized distributors