


Product datasheet

Anti-5HT3B receptor antibody ab90429

画像数 1

製品の概要

製品名	Anti-5HT3B receptor antibody
製品の詳細	Goat polyclonal to 5HT3B receptor
由来種	Goat
アプリケーション	適用あり: WB
種交差性	交差種: Human 交差が予測される動物種: Chimpanzee 
免疫原	Synthetic peptide: C-SNYLQTQDQTDQQE , corresponding to internal sequence amino acids (near C terminus) 389-402 of Human 5HT3B receptor (NP_006019.1). Run BLAST with Run BLAST with
ポジティブ・コントロール	Human brain (cerebral cortex, hippocampus and amygdala lysate)

製品の特性

製品の状態	Liquid
保存方法	Shipped at 4°C. Upon delivery aliquot and store at -20°C. Avoid freeze / thaw cycles.
バッファー	Preservative: 0.02% Sodium Azide Constituents: 0.5% BSA, Tris saline, pH 7.3
精製度	Immunogen affinity purified
特記事項 (精製)	Purified from goat serum by ammonium sulphate precipitation followed by antigen affinity chromatography using the immunizing peptide.
ポリ/モノ	ポリクローナル
アイソタイプ	IgG

アプリケーション

Our [Abpromise guarantee](#) covers the use of **ab90429** in the following tested applications.

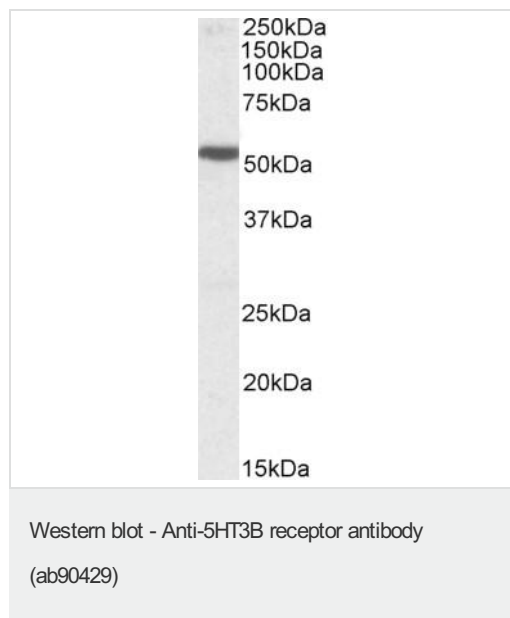
The application notes include recommended starting dilutions; optimal dilutions/concentrations should be determined by the end user.

アプリケーション	Abreviews	特記事項
WB		Use a concentration of 1 - 3 µg/ml. Detects a band of approximately 51 kDa (predicted molecular weight: 50 kDa).

ターゲット情報

機能	This is one of the several different receptors for 5-hydroxytryptamine (serotonin), a biogenic hormone that functions as a neurotransmitter, a hormone, and a mitogen. This receptor is a ligand-gated ion channel, which when activated causes fast, depolarizing responses. It is a cation-specific, but otherwise relatively nonselective, ion channel.
組織特異性	Expressed in the brain cortex, in the caudate nucleus, the hippocampus, the thalamus and the amygdala. Detected in the kidney and testis as well as in monocytes of the spleen, small and large intestine, uterus, prostate, ovary and placenta.
配列類似性	Belongs to the ligand-gated ion channel (TC 1.A.9) family. 5-hydroxytryptamine receptor (TC 1.A.9.2) subfamily. HTR3B sub-subfamily.
翻訳後修飾	N-glycosylation required for membrane localization.
細胞内局在	Cell membrane. Presumably retained within the endoplasmic reticulum unless complexed with HTR3A.

画像



Anti-5HT3B receptor antibody (ab90429) at 1 µg/ml + Human cerebral cortex lysate at 35 µg

Developed using the ECL technique.

Predicted band size: 50 kDa

Observed band size: ~51 kDa

Primary incubation was 1 hour

Please note: All products are "FOR RESEARCH USE ONLY AND ARE NOT INTENDED FOR DIAGNOSTIC OR THERAPEUTIC USE"

Our Abpromise to you: Quality guaranteed and expert technical support

- Replacement or refund for products not performing as stated on the datasheet

- Valid for 12 months from date of delivery
- Response to your inquiry within 24 hours

- We provide support in Chinese, English, French, German, Japanese and Spanish
- Extensive multi-media technical resources to help you
- We investigate all quality concerns to ensure our products perform to the highest standards

If the product does not perform as described on this datasheet, we will offer a refund or replacement. For full details of the Abpromise, please visit <http://www.abcam.co.jp/abpromise> or contact our technical team.

Terms and conditions

- Guarantee only valid for products bought direct from Abcam or one of our authorized distributors