


## Product datasheet

# Anti-14-3-3 sigma antibody ab54420

1 References [画像数 1](#)

### 製品の概要

製品名	Anti-14-3-3 sigma antibody
製品の詳細	Rabbit polyclonal to 14-3-3 sigma
アプリケーション	<b>適用あり:</b> IHC-P <b>適用なし:</b> IHC-Fr or WB
種交差性	<b>交差種:</b> Human <b>交差が予測される動物種:</b> Mouse, Rat, Sheep, Horse, Cow, Dog, Pig, Chimpanzee, Rhesus monkey 
免疫原	Synthetic peptide: SNEEGSEEKGPEV , corresponding to internal sequence amino acids 69-81 of Human 14-3-3 sigma <a href="#">Run BLAST with</a> <a href="#">Run BLAST with</a>
ポジティブ・コントロール	Human breast carcinoma tissues.

### 製品の特性

製品の状態	Liquid
保存方法	Shipped at 4°C. Upon delivery aliquot and store at -20°C or -80°C. Avoid repeated freeze / thaw cycles.
バッファー	Preservative: 0.1% Sodium Azide Constituents: Whole serum
精製度	Whole antiserum
ポリ/モノ	ポリクローナル
アイソタイプ	IgG

### アプリケーション

Our [Abpromise guarantee](#) covers the use of **ab54420** in the following tested applications.

The application notes include recommended starting dilutions; optimal dilutions/concentrations should be determined by the end user.

IHC-P

## 追加情報

IHC-P: 1/1000. Heat pre-treatment required.

Is unsuitable for IHC-Fr or WB.

Not yet tested in other applications.

Optimal dilutions/concentrations should be determined by the end user.

## ターゲット情報

## 機能

Adapter protein implicated in the regulation of a large spectrum of both general and specialized signaling pathways. Binds to a large number of partners, usually by recognition of a phosphoserine or phosphothreonine motif. Binding generally results in the modulation of the activity of the binding partner. When bound to KRT17, regulates protein synthesis and epithelial cell growth by stimulating Akt/mTOR pathway. May also regulate MDM2 autoubiquitination and degradation and thereby activate p53/TP53.

p53-regulated inhibitor of G2/M progression.

## 組織特異性

Present mainly in tissues enriched in stratified squamous keratinizing epithelium.

## 配列類似性

Belongs to the 14-3-3 family.

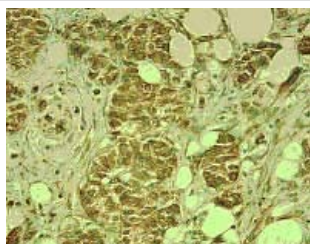
## 翻訳後修飾

Ubiquitinated. Ubiquitination by RFFL induces proteasomal degradation and indirectly regulates p53/TP53 activation.

## 細胞内局在

Cytoplasm. Nucleus. Secreted. May be secreted by a non-classical secretory pathway.

## 画像



[ab54220](#), at 1/1000 dilution, staining Human

14-3-3 sigma in breast carcinoma tissue.

Paraffin embedded sections. Detection using

DAB with methyl green counterstain.

Immunohistochemistry (Paraffin-embedded sections)

- 14-3-3 sigma antibody (ab54420)

**Please note:** All products are "FOR RESEARCH USE ONLY AND ARE NOT INTENDED FOR DIAGNOSTIC OR THERAPEUTIC USE"

### Our Abpromise to you: Quality guaranteed and expert technical support

- Replacement or refund for products not performing as stated on the datasheet

- Valid for 12 months from date of delivery
- Response to your inquiry within 24 hours
  
- We provide support in Chinese, English, French, German, Japanese and Spanish
- Extensive multi-media technical resources to help you
- We investigate all quality concerns to ensure our products perform to the highest standards

If the product does not perform as described on this datasheet, we will offer a refund or replacement. For full details of the Abpromise, please visit <http://www.abcam.co.jp/abpromise> or contact our technical team.

## **Terms and conditions**

---

- Guarantee only valid for products bought direct from Abcam or one of our authorized distributors